



12D10N | CHINA XINJIANG Hidden Wonderland of Northern Xinjiang + 1 DAY FREE & EASY

URUMQI | BEITUN | JIADENGYU | BURQIN | YINING | NALATI | KUITUN

No Shopping Stop

12天10晚 | 中国新疆

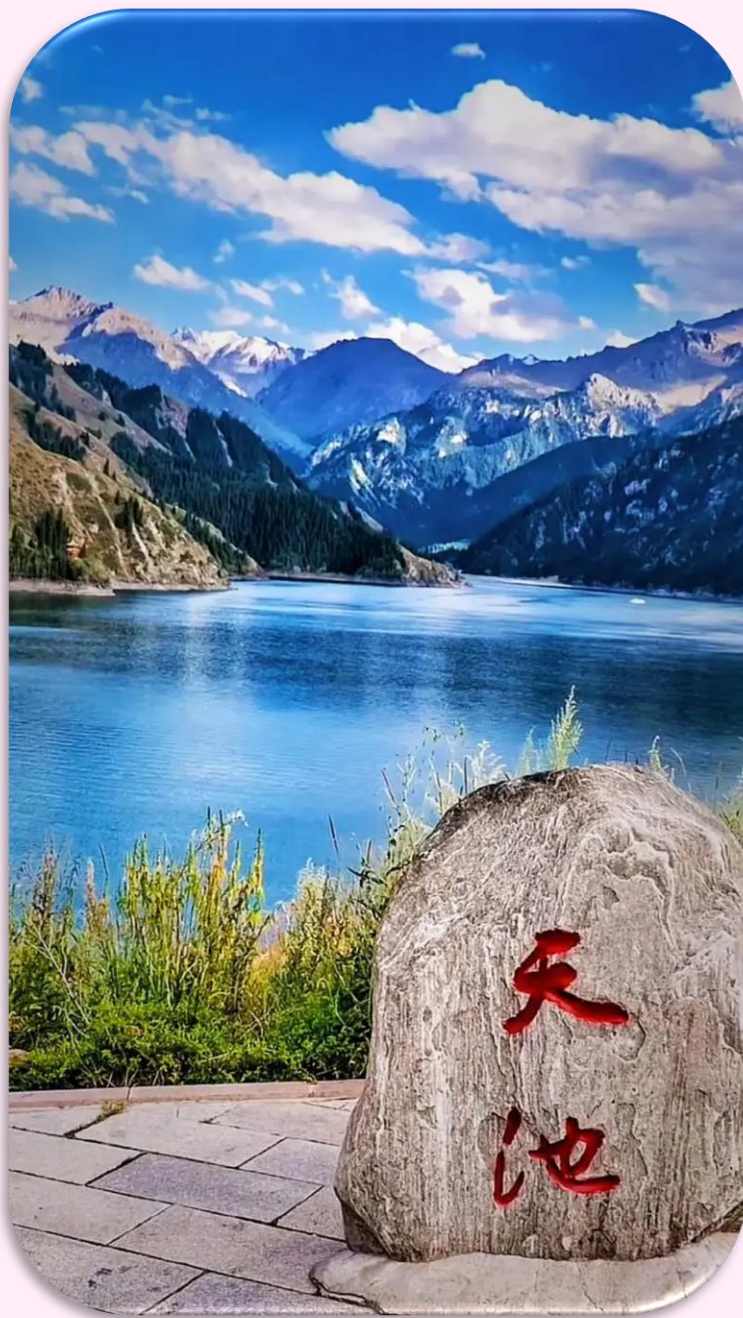
一步一景秘境~北疆 + 1天自由行

乌鲁木齐 | 北屯 | 贾登峪 | 布尔津 | 伊宁 | 那拉提 | 奎屯

无购物站

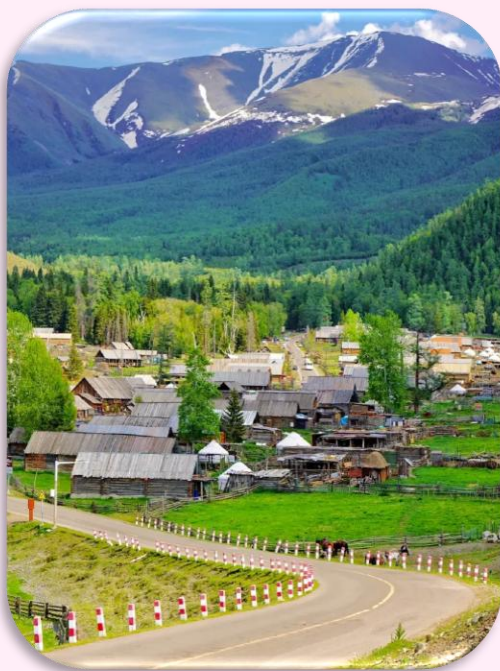
天山天池：雪山环抱的蓝宝石湖泊

TIANSHAN TIANCHI: A SAPPHIRE LAKE EMBRACED
BY SNOWY MOUNTAINS



禾木村：童话世界

HEMU VILLAGE: A FAIRTALE WORLD



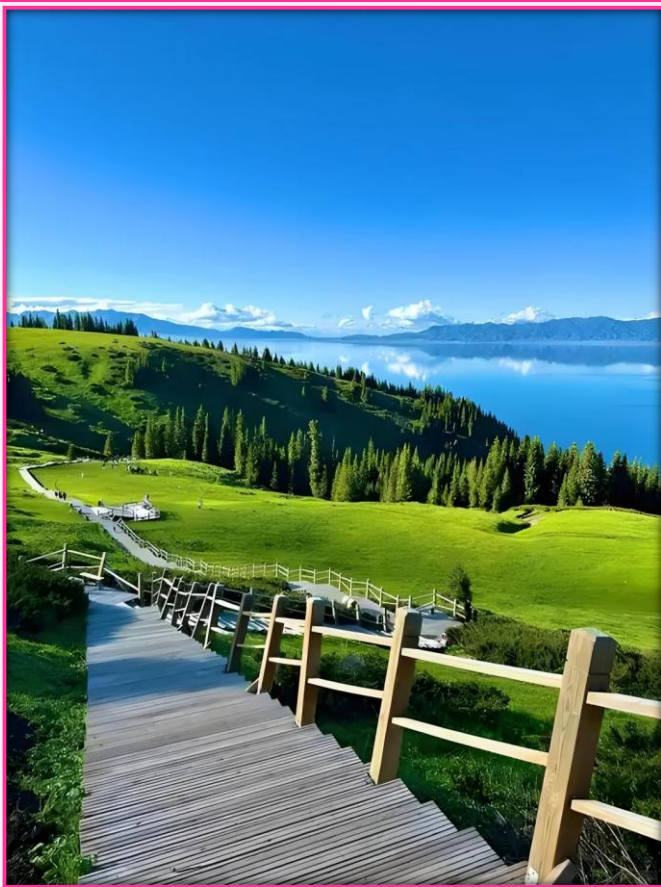
那拉提：空中草原，穿行花海

NALATI: PRAIRIE AIR, WANDERING THROUGHT
FIELDS OF FLOWERS



喀纳斯湖：探秘“水怪传说”

KANAS LAKE: UNCOVER THE MYSTERY OF THE
LAKE MONSTER LEGEND



赛里木湖：湖水蓝到窒息

SAYRAM LAKE: BREATHTAKINGLY BLUE WATERS





图开沙漠

沙漠卡丁车，滑沙飞驰，篝火孔明灯之约

TUKAI DESERT

DESERT GO-KARTING, SAND SURFING THRILLS, AND A
BONFIRE NIGHT WITH SKY LANTERNS.





独库公路：新疆最美公路

DUKU HIGHWAY: THE MOST BEAUTIFUL ROAD
IN XINJIANG



独山子大峡谷：隐匿在尘世的仙境

DUSHANZI GRAND CANYON: A HIDDEN PARADISE ON EARTH



oops!

HIGHLIGHTS



飞赏北疆阿勒泰直飞博乐

1.05小时飞行替代9h车程

乘坐飞机 游新疆更带劲!

Steady direct flight



出发地

阿勒泰

841KM (约1.05小时)

目的地

博乐

节省整整一天时间

让您多游玩至少**2个**景点



2+1 航空座椅

TRAVEL SECURITY

出行保障

2+1 航空座椅



空间大 动力足 ✓

老司机保驾护航 ✓

商务车里伸开腿 ✓

保障安全舒适度 ✓



第一天 吉隆坡国际机场 - 中转 - 乌鲁木齐



- 机场集合办理登记手续，前往乌鲁木齐

第二天 乌鲁木齐 - 天山 - 乌鲁木齐 (240KM)



天山天池

又称天池国家地质公园，古称“瑶池”，位于昌吉州阜康市境内，博格达山的北侧，距乌鲁木齐市约110公里，是新疆有名的旅游胜地。在中国古代神话中，天池还是西王母娘娘沐浴的地方

- 国际大巴扎



第三天 乌鲁木齐 - 北屯 (460KM)



S21 沙漠公路

又称阿乌高速，是北疆首条沙漠高速公路，穿越中国第二大沙漠古尔班通古特沙漠，全长 342.5公里

- 海上魔鬼城

第四天 北屯 - 贾登峪 (300KM)



禾木村 (含区间车)

禾木村位于新疆布尔津县喀纳斯湖畔，是图瓦人的集中生活居住地，是仅存的3个图瓦人村落（禾木村、喀纳斯村和白哈巴村）中最远和最大的村庄。



第五天 贾登峪 - 布尔津 (180KM)



喀纳斯风景区 (含区间车)

在这个美丽富饶、神秘莫测（蒙古语“喀纳斯”的含义）的湖边，你能够看到清澈宁静的湖水，湖水还会随着季节和天气的变化而时常变换颜色。环湖四周混合了云杉、冷杉和西伯利亚落叶松的原始森林，阳坡被茂密的草丛覆盖，不同的植物群落层次分明。

- 观鱼台
- 卧龙湾、月亮湾、神仙湾
- 布尔津网红桥

第六天 布尔津 - 阿勒泰 - 博乐 (120KM)



- 搭乘内陆航班从阿勒泰到博乐
- 赛里木湖

身在西北最后一滴眼泪—赛里木湖，你永远不能判断出天空和湖水的蓝哪个更胜一筹，仿佛置身于两面巨大的蓝镜中间，不管抬头望还是低头瞰，都是一汪清澈的蓝。

- 图开沙漠
- 放孔明灯
- 篝火晚会

第七天 博乐 - 伊宁 (160KM)



- 图开沙漠 (含卡丁车+无限次滑沙)
- 六星街

3月的白番红花、4月的杏花、
5月的天山红花、6月的薰衣草、
7月的油菜花、8月的向日葵、9月的香紫苏

第八天 伊宁 - 那拉提 (260KM)



- 那拉提风景区
- 空中草原

是新疆新源县那拉提旅游风景区的组成部分之一，从远处看，一半是草原一半是雪山。在蓝天白云下，雪山，赛马场，草原，山丘，溪流相互交融，宛如一幅美丽的风景画

第九天 那拉提 - 奎屯 (220KM)



唐布拉草原

景区内草原风景十分优美，拥有奇特的阿尔斯郎石林、壮观的草原落日，冰峰雪岭倒映在静寂幽深的高山湖泊之中。这里温暖清爽的温泉，蓝蓝的天，绿茵茵的草场，每时每刻给人以美的享受

- 独库公路
- 新疆最美公路

第十天 奎屯 - 乌鲁木齐 (260KM)



独山子大峡谷

位于天山北麓，是完全由砾石和沙子组成的地层，是遥远的海床，并且是地质运动后的隆起的陆地。

第十一天 乌鲁木齐



- 全天自由行

第十二天 乌鲁木齐 - 中转 - 吉隆坡



- 早餐后，送往机场
- 结束美好的行程

推荐自费：
千回西域表演: RMB380/人

DAY 01

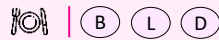
KLIA – TRANSIT - URUMQI



- Depart from Kuala Lumpur International Airport to Urumqi

DAY 02

URUMQI – TIANSHA – URUMQI (240KM)



- **Tianshan Tianchi**
also known as Tianchi National Geopark, was called "Yaochi" in ancient times. It is located in Fukang City, Changji Prefecture, on the north side of Bogda Peak, about 110 kilometers away from Urumqi City. It is a famous tourist destination in Xinjiang. In ancient Chinese mythology, Tianchi is also the place where the Queen Mother of the West bathed.
- **Xinjiang International Grand Bazaar**

DAY 03

URUMQI – BEITUN (460KM)



- **S21 Desert Expressway**
Known as Awu Expressway, is the first desert expressway in Northern Xinjiang, crossing the Gurbantünggüt Desert with a length of 342.5 kilometers.
- **Sea Devil's City**

DAY 04

BEITUN – JIADENGYU (300KM)



- **Hemu Village (Include Shuttle Bus)**
is located on the shore of Kanas Lake in Burqin County, Xinjiang, it is the concentrated living place of the Tuva people. It is the farthest and largest village among the only remaining Tuva villages (Hemu Village, Kanas Village and Baihaba Village).

DAY 05

JIADENGYU – BURQIN (180KM)



- **Kanas Lake Nature Reserve (Include Shuttle Bus)**
In the beautiful and mysterious (meaning of the Mongolian "Kanas"), you can see the clear and tranquil lake, the lake will change color according to season and the weather. The virgin forests of spruce, fir and Siberian larch are mixed around the lake
- **Guanyu Pavilion**
- **Crouching Dragon Bay, Moon Bay, Fairy Bay**

DAY 06

BURQIN – ALTAY – BOLE (120KM)



- **Domestic flight from Altay to Bole**
- **Sayram Lake**
In the last drop of tear in the northwest - Sayram Lake, you can never judge the blue of the sky and the lake, which is like being in the middle of the huge blue mirror on both sides, no matter if you look up or look down it is a clear blue
- **Tukai Desert**
- **Release sky lanterns**
- **Bonfire party**

Optional:
"The Legend of the Western Regions" Show :
RMB 380/person

DAY 07

BOLE – YINING (160KM)

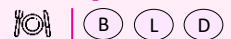


- **Tukai Desert**
- Includes **go-karting + unlimited sand sliding**
- **Six-Star Street**

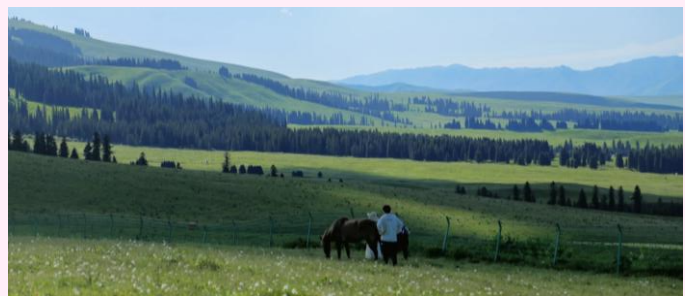
Mar – White Crocuses, Apr – Apricot Blossoms
May – Tianshan Red Flowers
Jun – Lavender, Jul – Canola Flowers
Aug – Sunflowers, Sep – Perilla Flowers

DAY 08

YINING – NALATI (260KM)



- **Nalati Scenic Area**
- **Prairie Air**
Under the blue sky and white clouds, snow-capped mountains, racecourses, grasslands, hills, and streams blend with each other, like a beautiful landscape painting.



DAY 09

NALATI – KUYTUN (220KM)



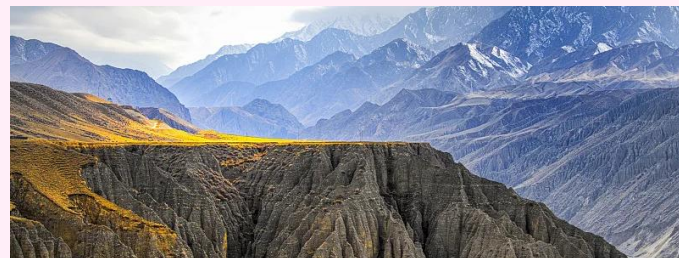
- **Tangbla Grassland**
The grassland scenery in the scenic area is very beautiful, with the peculiar Arslang Stone Forest, the magnificent grassland sunset, and the ice peaks and snow ridges reflected in the quiet and deep alpine lakes. The warm and refreshing hot springs, the blue sky, and the green pastures here give people a beautiful enjoyment every moment.
- **Duku Highway**
The Most Beautiful Road in Xinjiang

DAY 10

KUYTUN – URUMQI (260KM)



- **Dushanzi Grand Canyon**
Located at north foot of Tianshan Mountain, Dushanzi Grand Canyon is of the stratum consisting of gravel and sand completely, which should be the seabed in the distant past, and uplift to be the land after geological movement.



DAY 11

URUMQI



- **FREE & EASY**

DAY 11

URUMQI – TRANSIT - KLIA



- **After breakfast, transfer to airport**
- **End of a wonderful journey**

航班详情 FLIGHT INFO

CX 724	KUL	HKG	1740	2200
CX 998	HKG	URC	0130+1	0700+1
CX 997	URC	HKG	1015	1520
CX 729	HKG	KUL	1610	2010

酒店详情 HOTEL INFO

当地4星住宿星级 (最后确认于同级酒店为准)

Hotel based on local 4 star or Similar Class (Final confirmation on similar standard)

URUMQI

美豪·麗致酒店烏魯木齊旗艦店或同级
Meihao Ritz Hotel Urumqi
Branch or similar

BEITUN

北屯辰際花園酒店或同级
Beitun Chenji Garden Hotel or
similar

KANAS

喀纳斯鸿福生态度假酒店或同级
Hongfu Lake Kanas Resor or similar

BURQIN

布爾津白樺林錦潤酒店或同级
Birch Forest Jinrun Hotel or
similar

TUKAI DESERT

图开沙漠轻奢酒店或同级
Tukai Desert Luxury Hotel or
similar

YINING

順文酒店酒店或同级
Shunwen Hotel Yining Hotel or
similar

NALATI

鑫都佳悅飯店或同级
Xindu Jiayue Hotel or similar

KUYTUN

奎屯錦滙國際大酒店或同级
Jinhui International Hotel or similar

TERMS & CONDITIONS

- Flights, transportation, hotels, meals and itinerary stated in the brochure are subject to change without prior notice. Any changes after booking shall be advised accordingly.
- The sequence of itinerary, meals and hotel arrangements are subject to the final confirmation by the local ground operator due to weather situation.
- Tour buses are arranged based on group size. Every passenger is entitled to one seat each. Should there be extra seats remaining, it shall be reserved for the baggage storage.
- Tour is conducted in Mandarin, unless otherwise stated.
- Purchase of travel insurance is highly advisable.
- The images shown in tour itinerary are only for indicative.
- For other conditions, please refer to overleaf of your booking form for our standard terms and conditions.
- The english version of itinerary shall prevail.

条款与条件

- 行程表所列出的航班资料，交通，行程，酒店住宿及膳食安排，将可能因应不同的出发日期而有所变动，恕可能不及时通知。若报名后行程有所变动，本社将另行个别通知。
- 行程，膳食及住宿的先后次序，将以当地接待社和天气情况安排为准。
- 本公司会根据团量来安排旅游巴士的大小，但若巴士行李舱放置空间不足时，若会遇上行李箱得放置在车厢内的可能，所以一人一座位为前提。
- 基本上全程中文讲解为主。若需要以其他语言讲解，务必在报名时提前通知本社。本社将另作安排，但将以最终确认为准。
- 团队出发前建议购买旅游保险以则安心。
- 行程表附上的照片仅供参考。
- 为确保消费者权益，详情请参阅单据背面之基本条规细节。
- 行程最终将以英文版本为准。