

中国

我爱旅游  
纵横万里

我爱旅游  
LOVELY  
VACATION  
WHERE HAPPINESS BEGINS

TOUR CODE: CN9DNH

9天7晚

+ DIRECT FLIGHT TO DUNHUANG

吉隆坡 直飞敦煌

独家行程推荐!

寻梦敦煌

甘肃



+ 巴尔斯雪山之旅  
入住沙漠星空帐篷

敦煌西线 独家深度游  
“玉门关+雅丹地质公园”



纯玩品质游  
无购物系列  
NO SHOPPING STOP



体验野奢沙漠晚宴  
啤酒+饮料畅饮+  
无限四轮越野摩托车



独家呈现:绝佳体验  
入住沙漠星空帐篷  
和巴尔斯民宿



奢享2+1VIP旅巴  
更舒适更宽敞  
的旅途体验



9天7晚

大漠风光/寻梦

敦煌甘肃

奇遇之旅

TOUR CODE: CN9DNH

无购物系列  
纯玩品质游

第1天 吉隆坡—敦煌(机上便餐) KUL/DNH OD8638 1500-2145

住宿：敦煌福华国际酒店 或 沙洲景华酒店 或 尚合怡景酒店或同级

集合于吉隆坡国际机场，办理手续后，搭乘客机直飞敦煌。

直飞敦煌·包机系列 | BatikAir马来西亚峇迪航空

出发日期：29 Aug (首航), 5 Sep, 12Sep, 19 Sep, 26 Sep



第2天 敦煌-酒泉(车程380公里,行车4小时) | 早餐：酒店内 午餐：雪山驼掌风味 晚餐：汽锅鸡风味

住宿：酒泉天脉缘酒店或维也纳酒店或同级酒店

► **鸣沙山月牙泉** (含电瓶车+鞋套+骑骆驼) 位于甘肃省敦煌市城南。鸣沙山因“鸣沙”而得名。“积沙成丘”鸣沙山是真正由流沙堆积而成山脉，沙粒有五彩: 分红、黄、绿、白、黑五色。月牙泉处于鸣沙山环抱之中，因其形状酷似一弯新月而得名。月牙泉有三宝：铁背鱼、五色沙、七星草。鸣沙山和月牙泉实则为一体，古往今来以“山泉共处，沙水共生”的奇妙景观著称于世，被誉为“塞外风光之一绝”。

► **大地之子** 清华美院雕塑系主任董书兵创作。沙漠深处，熟睡婴儿状，寓意人类为地球之子，唤醒环保意识。

► **无界** 董书兵设计制作，国内最大钢构建雕塑，位于瓜州红山坡戈壁，传统宫殿样式与现代材料结合，虚实视觉效果。

► **汉武帝雕塑** 红砂岩材质，3D技术雕刻，展示汉武帝豪迈气概。



鸣沙山月牙泉



大地之子



无界

第3天 酒泉-张掖(车程206公里,行车2小时) | 早餐：酒店内 午餐：中式合菜 晚餐：甘州排骨

住宿：巴尔斯民宿

► **巴尔斯雪山** 位于甘肃省张掖市肃南裕固族自治县大河乡西岔河村境内，地处祁连山北麓中段，是一座以雪山、冰川、草原等自然景观为核心，融合裕固族文化特色的生态旅游景区，被誉为“祁连山秘境”“丝绸之路明珠”和“东方阿尔卑斯”。在裕固族语中，巴尔斯意为“高大、雄伟、神圣”。

**\*巴尔斯雪山含区间车 售票处距离山顶观景台乘坐区间车需要50分钟车程、山顶观景台海拔4000，售票口海拔2600，只限于9月团队。**

► **裕固族文化艺术展馆** 馆内展示裕固族民俗艺术品、民族服饰、古建筑构件、乐器、生产生活用品等各类藏品 230 件。现有馆办文艺团队十余支，整理创作编排原生态民族锅庄舞，裕固族广场舞、“裕固族牛角鼓舞”等。

► **肃南转经筒** 也被称为玛尼经筒，与观音菩萨的六字真言“嗡玛尼叭咪吽”有关。藏传佛教认为持诵六字真言越多就是对佛和菩萨越虔诚。肃南转经轮是世界最大的转经轮。

► **康乐草原** 拥有268万亩的广袤面积，草原、森林、雪山、溪流交相辉映，构成了一幅绝美的自然画卷。九排松景观是草原的一大亮点，青松翠柏整齐排列，山势雄浑，林木参天，是拍照留念的绝佳地点。



巴尔斯雪山



巴尔斯民宿





第 4 天 巴尔斯 - 张掖 | 早餐：酒店内 午餐：中式合菜 晚餐：自费

住宿：张掖铭嘉乐酒店 或 张掖丝路悦港酒店 或 品尊国际酒店或同级

- ▶巴尔斯雪山日出 清晨，当第一缕阳光洒在雪山顶上，那一刻的震撼和美丽，真的让人心潮澎湃。金色的阳光与洁白的雪山交相辉映，仿佛整个世界都变得神圣而庄严。
  - ▶张掖七彩丹霞 （含电瓶车）位于甘肃省张掖市临泽县、肃南县境内，是中国北方干旱地区发育最典型的丹霞地貌，也是国内唯一的丹霞地貌与彩色丘陵景观高度复合区。景区总面积达50平方公里，以其色彩斑斓、形态各异、壮观奇异的特点，吸引了无数游客前来观赏。七彩丹霞以其丰富多彩的色彩著称，薄层状泥岩、砂质泥岩及页岩互层交错，紫红色、灰绿色、黄绿色、灰黑色等色彩交相辉映，组合有序，极富有韵律感和层次感。景区内形态各异的石林、峰丛、峡谷、溶洞等景观令人叹为观止。其中，神龙戏火、灵猴观海、众僧拜佛、大扇贝等景点都是游客们争相打卡的热门地点。
  - ▶丹霞口小镇 位于张掖市临泽县，是集美食、商业、文化、会展、民宿和演艺于一体的旅游度假小镇。紧邻地质公园，有游客中心和智能服务系统，位于丝路必经之地，还原古丝路市井风情，提供免费全天旅游体验。
- \*\*\*推荐自费：裕固族风情宴 (含敬酒+迎宾仪式+歌舞表演)+回道张掖演出 人民币380元/人
- 注：不参加风情宴的客人，小镇餐厅现点，费用自理



巴尔斯雪山日出



张掖七彩丹霞



丹霞口小镇

第 5 天 张掖 - 嘉峪关 (车程246公里，行车2.5小时) | 早餐：酒店内 午餐：中式合菜 晚餐：中式合菜

住宿：嘉峪关白鹿隐居酒店 或 嘉峪关宾馆 或 嘉峪关酒钢宾馆或同级

- ▶酒泉公园 又名酒泉西汉胜迹，因园中有酒泉而得名，已有两千多年的历史，现为一座集古典园林、天然湖、文化游憩、趣味娱乐于一体的综合性公园。今泉犹在，园林式建筑、牌楼历经修葺，保存完好。
- ▶嘉峪关关城 独家行程（含电瓶车）为紧要关口，见证内地与西域纷争与融合。长城保存最完整雄关，由外城、内城、瓮城等多部分组成，构成多道防线。左宗棠曾修整关墙、关楼，题“天下第一雄关”匾额。
- ▶长城博物馆 木塔寺的木塔高 32.8 米，八面九级，每级八角有木刻龙头，口含宝珠，下挂风铃。塔主体为木质结构，窗上雕有花饰，全塔没有一钉一铆，靠斗拱、大梁立柱连结，结构精巧。
- ▶悬臂长城 距离甘肃省嘉峪关市区约11公里，因筑于约45度的山脊之上，形似凌空倒挂而得名。悬臂长城是嘉峪关关城的北向延伸部分，是嘉峪关古代军事防御体系的重要组成部分。



第 6 天 嘉峪关 - 敦煌 (车程368公里，行车4小时) | 早餐：酒店内 午餐：中式合菜 晚餐：沙漠晚宴-独家呈现

住宿：沙漠星空帐篷 🥰我爱旅游;独家呈现📌

- ▶紫轩葡萄酒 有欧式小镇风情、超大酒窖、葡萄种植园、酿酒工艺参观依旧品酒。作为工业游特色景区，在苍凉壮阔的边陲嘉峪关“葡萄美酒夜光杯”这一画面，有了最真实的影像记录。紫轩拥有亚洲最大的单体酒窖，在专业的品酒室中，可以品尝到梅尔诺干红、赤霞珠干红等特色葡萄酒。
  - ▶沙漠晚宴 【野奢沙漠晚宴】到达露营基地后，可以先体验【自助火锅】、啤酒饮料畅饮。吃好玩好休息片刻，营地就在刚才生火，大家可以体验【激情沙漠游玩项目】。在篝火旁跳舞、唱歌，感受热闹的氛围。以及丝路狂沙（ATV四轮越野摩托车）无限次体验、滑沙、烟花，篝火晚会等等。
- 自费项目：沙漠旅拍 - 人民币399 ~ 799/人不等.... 配套包含服饰+化妆+拍摄



紫轩葡萄酒



篝火旁跳舞



野奢沙漠晚宴



沙漠星空帐篷\*

🥰我爱旅游;独家呈现📌 | 住宿：沙漠星空帐篷

\*注：如遇到极端天气沙漠露营将改为酒店形式入住，晚宴改室内享用



第 7 天 敦煌西线深度游 🏠独家行程呈现 | 早餐：酒店内 午餐：中式合菜 晚餐：敦煌八景欢送宴  
住宿：敦煌福华国际酒店 或 沙洲景华酒店 或 尚合怡景酒店或同级

- ▶**玉门关** 位于甘肃省敦煌市西北约90公里的戈壁深处，与阳关并称“汉塞双壁”，是汉代长城西端核心关隘，扼守丝绸之路北线咽喉，素有“西域门户”、“春风不度”之誉。这座被戈壁风沙侵蚀两千年的夯土雄关，承载着中原王朝拓疆西域的铁血雄心与丝路文明的千年对话。
- ▶**雅丹地质公园**（含电瓶车）位于敦煌市西北158km处，园区面积398.4km²，分南、北两区，主要风蚀作用而形成的第四纪地质遗迹和自然地理大漠景观。景区内地质遗迹类型丰富多样，共77处地质遗迹点，拥有各种造型奇特的风蚀地貌和大漠景观，具有重要的旅游观光和地质科考价值。景区内有敦煌魔鬼城、金狮迎宾、猿人头像等著名景点。



第 8 天 敦煌 - 吉隆坡 DNH/KUL OD8639 2245-0550+1 | 早餐：酒店内 午餐：中式合菜 晚餐：夜市自理

- ▶**莫高窟**（含区间车+千年莫高+梦幻佛宫+8个洞窟）又名“千佛洞”，是我国三大石窟艺术宝库之一，被誉为20世纪最有价值的文化发现、“东方卢浮宫”，坐落在河西走廊西端的敦煌，以精美的壁画和塑像闻名于世。它始建于十六国的前秦时期，历经十六国、北朝、隋、唐、五代、西夏、元等历代的兴建,形成巨大的规模，现有洞窟735个，壁画4.5万平方米、泥质彩塑2415尊，是世界上现存规模最大,内容最丰富的佛教艺术圣地。
- 推荐自费：乐动敦煌表演 人民币298/人  
注：晚上不参加自费的顾客可自行前往游览 沙洲夜市



第 9 天 抵达吉隆坡

自费项目推荐:

乐动敦煌 - 298元/人 | 沙漠旅拍 - 399~799元/人 | 裕固族风情宴（含哈达敬酒+迎宾仪式+歌舞表演）- 380元/人。

备注：  
行程若更改，需受公司的条款与细则所约束。顾客尤其需注意以下事项：在公司无法控制的情况下，行程可能更改。  
指定城市的住宿需视客房供应情况而定。行程顺序可能更改。不同团体可能合并成一团。若有更改不被接受，需遵守条款与细则中的退款规定。

温馨提示：

1. 西北大部分地区地处高原，海拔通常在 800-3000 米左右，青藏高原平均海拔在 3500 米，大气含氧量只及平地六成，初抵达者往往有轻微的高原反应，团员们要多喝水，注意休息，行动不要过激过急。
2. 西北地区位于我国西北内陆，气候以温带大陆性气候为主，日照强度与昼夜温差较大，请游客根据自身情况，带足御寒衣物，水壶，墨镜太阳帽和防晒油。
3. 受旅游地自然条件限制，景点沿途餐厅的条件和广东相比较，无论从软硬件设施或饭菜质量都有一定的差距，且北方大部分地区口味偏重，喜辛辣。
4. 西北地区由于地域辽阔，景点之间车程较长，请注意调配好时间，以充足的体力参加旅游活动。
5. 受宗教影响，西北风俗习惯与我们不同，游览时请注意有关旅游注意事项，入乡随俗，在任何场合下都不要提及有关少数民族的政治问题，配合好当地导游的工作。
6. 穆斯林民族地区（包括西北地区回、哈萨克等民族）
7. 在旅游地区进行自费项目或选购旅游纪念品时，请事先了解及谈定价钱，一定要听从当地导游的提示。
8. 相机拍摄建议： 1)、防尘：相机在野外最怕风沙，沙漠中的微尘无孔不入。最好的办法是将镜头调至最短，用塑料袋封好，放在摄影包中备用。摄影包最好有盖，另外，拉链千万不要忘记拉上。塑料袋要时常更换，因为不长的时间，袋里就会积存大量沙尘。拍完照片后要立即将相机收好。 2)、除尘：一天的拍摄下来，尽管精心保护，相机中也难免有微小沙粒。一个气吹与一支羊毛小刷子无疑是十分必需的。千万不要随使用其他东西擦拭镜头。
9. 整个旅途中，团友要注意保管好自己的财物，注意保管随身现金、相机、手机等财物，以免造成不必要的损失，影响以后的行程。
10. 各地至西北往返航班较少及机票价格相对较昂贵，故我公司在不影响行程、景点的前提下，会选择个别经停或中转航班，以求做到物美价优。
11. 因不可抗力因素如（战争、地震、洪水冲毁道路、塌坊、雪崩）及一切非人为因素而造成超出费用由顾客自行分担，恳请客人体谅。
12. 西北酒店标准比内地偏低，请旅游者提前做好心理准备。如遇旺季（每年 7 月 1 日至 10 月 07 日之间）酒店资源紧张或政府临时征用等特殊情况，造成行程中备选酒店客满，我社有权调整为同等级标准以上酒店。如遇返程为晚班机的旅客可把行李寄存在酒店前台后自由活动或自补房差开钟点房休息。
13. 行程中所含的餐食，早餐为酒店房含，不用不退。正餐按产品用餐标准操作。西北用餐口味较重，且普通团队餐厅菜式比较雷同。建议顾客可自带些咸菜或辣椒酱等佐餐。
14. 青海甘肃路线比较长，坐车时间比较长，所以大家多备些零食及水，以便路上用，西北以辣、牛、羊、为主，如果想吃清淡的，自己带些。
15. 西北的东西可以看，但不能摸，看上个东西，决定买在还价，不买就不要还价。
16. 照相时就把自己的随身物品保管好，照相时也在带在身上，别为了美丽而丢失财物哦。





嘉峪关汽锅鸡



甘州排骨



大漠风沙鸡

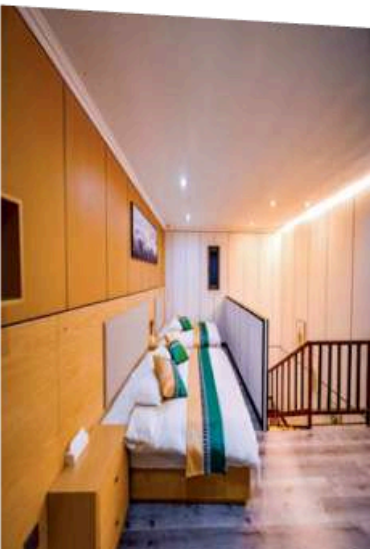
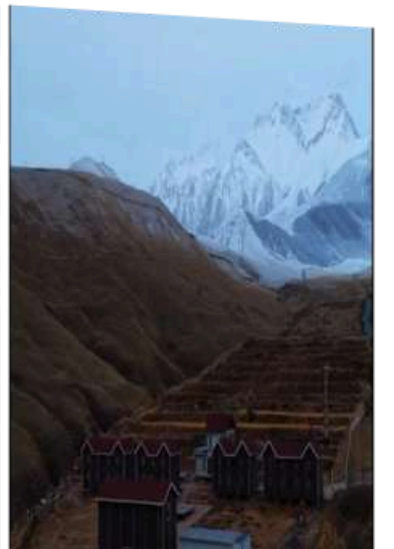


敦煌雪山驼掌

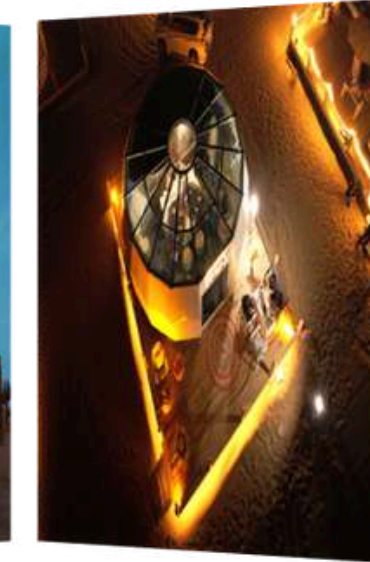
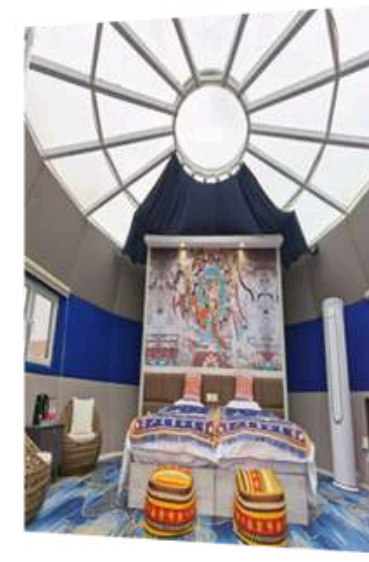


裕固族风情宴

## 独家呈现 特别行程---巴尔斯雪山+巴尔斯名宿体验



## 独家呈现 特别安排---野奢沙漠晚宴+入住沙漠星空帐篷体验



## 条款与条件 TERMS & CONDITIONS

1. 行程表所列出的航班资料，交通，行程，酒店住宿及膳食安排，将可能因应不同的出发日期而有所变动，恕可能不及时通知。若报名后行程有所变动，本社将另行个别通知。
2. 行程，膳食及住宿的先后次序，将以当地接待社和天气情况安排为准。
3. 本公司会根据团量来安排旅游巴士的大小，但若巴士行李舱放置空间不足时，若会遇上行李箱得放置在车厢内的可能，所以 一人一座位为前提。
4. 基本上全程中文讲解为主。若需要以其他语言讲解，务必在报名时提前通知本社。本社将另作安排，但将以最终确认为准。
5. 团队出发前建议购买旅游保险以则安心。
6. 行程表附上的照片仅供参考。
7. 为确保消费者权益，详情请参阅单据背面之基本条规细节。
8. 行程最终将以中文版本为准。

1. Flights, transportation, hotels, meals and itinerary stated in the brochure are subject to change without prior notice. Any changes after booking shall be advised accordingly.
2. The sequence of itinerary, meals and hotel arrangements are subject to the final confirmation by the local ground operator due to weather situation.
3. Tour buses are arranged based on group size. Every passenger is entitled to one seat each. Should there be extra seats remaining, it shall be reserved for the baggage storage.
4. Tour is conducted in Mandarin, unless otherwise stated.
5. Purchase of travel insurance is highly advisable.
6. The images shown in tour itinerary are only for indicative.
7. For other conditions, please refer to overleaf of your booking form for our standard terms and conditions.
8. The Chinese version of itinerary shall prevail.

Departure Date 出发日期:  
Airport Taxes 机场税:  
Travel Insurance 旅游保险:

Tour Fare 团费:  
Tipping 小费:

Travel Agent 合作伙伴:



# 9D7N DREAM OF DUNHUANG+ BARS SNOW MOUNTAIN

JIUQUAN / ZHANGYE / JIAYUGUAN / DUNHUANG WESTERN ROUTE IN-DEPTH

+ Desert Starry Sky Tent presented exclusively by Lovely Vacation

CN9DNH | Charter flight by Batik Air | Dep date. 29 Aug, 5 Sep, 12, Sep, 19 Sep, 26 Sep

**DAY 1: KUALA LUMPUR – DUNHUANG (MOB) KUL/DNH OD8638 1500-2145**

**Hotel: Dunhuang Fuhua International Hotel or Dunhuang ShaZhou Jinghua Hotel or Dunhuang Shangheyijing Hotel or similar**

Assemble at Kuala Lumpur International Airport for your flight to depart for Dunhuang Airport. Upon arrival, transfer to the hotel.

**DAY 2: DUNHUANG – JIUQUAN (B/L/D)**

**Hotel: Jiuquan Tianmai Yuan Hotel or Vienna International Hotel Jiuquan or similar**

After breakfast, visit Mingsha Mountain and Crescent Moon Spring (includes Eco car, shoe covers, and camel riding) located in the southern part of Dunhuang City, Gansu Province, formed entirely by accumulated drifting sand, Mingsha Mountain is a true sand dune range. Renowned since ancient times for the rare coexistence of mountain and spring, sand and water, the site is often hailed as "one of the most unique landscapes beyond the Great Wall." Later, proceed to Dadi Zhizi. This sculpture, shaped like a sleeping infant nestled deep in the desert, symbolizes humanity as a child of the Earth—awakening environmental consciousness through its peaceful form. Next, explore Wu Jie is the largest steel-structured sculpture in China. Located in the Gobi Desert at Hongshanpo, Guazhou, it blends the traditional architecture of palatial forms with modern materials, creating a powerful contrast of solidity and transparency that challenges spatial perception. Arrive at Emperor Wu of Han Sculpture, carved from red sandstone using advanced 3D technology,

**DAY 3: JIUQUAN – ZHANGYE (B/L/D)**

**Hotel: Barsi Boutique Guesthouse or similar**

After breakfast, visit Barsi Snow Mountain is an ecological tourism destination centered around stunning natural landscapes—snow-capped peaks, glaciers, and alpine grasslands—while also integrating the rich cultural heritage of the Yugur ethnic group. Next, arrive at Yugur Ethnic Culture and Art Museum is museum showcases a collection of 230 items, including Yugur ethnic handicrafts, traditional costumes, architectural components and musical instruments. Later, proceed to Sunan Prayer Wheel also known as the Mani Prayer Wheel, it is recognized as the largest prayer wheel in the world. Upon arrival at Kangle Grassland features a breathtaking natural landscape where grasslands, forests, snow-capped mountains, and streams blend harmoniously like a stunning painting. A major highlight of the area is the Nine Rows of Pines—a striking formation of lush pine and cypress trees arranged in neat rows.

*\*\*The ticket office is located 50 minutes by shuttle bus from the mountaintop viewing platform. The altitude of the viewing platform is 4,000 meters, while the ticket office is at an altitude of 2,600 meters. Shuttle bus service is available only for group tours in September.*

**DAY 4: BARS SNOW MOUNTAIN – ZHANGYE (B/L/-)**

**Hotel: Zhangye Mingjiale Hotel or Silk Road Yuegang Hotel or Pinzun International Hotel or similar**

In the morning, if we're lucky, we will have the opportunity to catch the sunrise of Barsi Snow Mountain (subject to weather), Golden sunlight and pristine white snow illuminate each other, casting a sacred and majestic glow over the entire landscape. Next, proceed to Zhangye Qicai Danxia Scenic Spot (include shuttle bus) is famous for its richly varied hues, with interbedded layers of thin mudstone, sandy mudstone, and shale. The vibrant blend of purplish-red, gray-green, yellow-green, and dark gray layers creates a visually rhythmic and layered effect that resembles a natural painting. The scenic spot also features a variety of dramatic landscapes, including stone forests, peak clusters, gorges, and karst caves, all in remarkable formations. Later, arrival at Danxiakou Town is a comprehensive tourist resort that integrates local cuisine, commerce, culture, exhibitions, homestays, and live performances.

*\*\* Optional tour: Yugur Ethnic Banquet + Memory of Zhangye Stage Show (RMB 380 per pax)*

*Notes: For guests do not participate Ethnic Banquet, meals can be order in town by own expenses*

**DAY 5: ZHANGYE – JIAYUGUAN (B/L/D)**

**Hotel: Bailu Hidden Holiday Hotel or Jiayuguan Hotel or Jiugang Hotel or similar**

After breakfast, visit the Jiuquan park with a history of over 2,000 years, it is now a comprehensive park that combines classical gardens, a natural lake, cultural recreation, and entertaining attractions. Next, proceed to Jiayu Pass exclusive Itinerary (include shuttle bus). It is the most well-preserved and imposing section of the Great Wall, consisting of multiple parts, including the outer city, inner city, and watchtower. Later, arrival at Great Wall Musuem, the Wooden Pagoda of Muta Temple stands at a height of 32.8 meters, with eight sides and nine levels. The pagoda's main structure is made of wood, with floral carvings on the windows. Arrive at Xuanbi Great Wall, the great wall derives its name from its construction along a mountain ridge with a steep 45-degree incline, making it appear as though it is hanging in midair.

**DAY 6: JIAYUGUAN – DUNHUANG (B/L/D)**

**Hotel: Desert Starry Sky Tent presented exclusively by Lovely Vacation**

After breakfast, take a coach to Zi Xuan Wine Estate, as a distinctive industrial tourism attraction, Zi Xuan Wine Estate brings to life the imagery of the famous line, "The wine cup glows in the light of the night, with fine grape wine", all against the vast, majestic landscape of Jiayuguan, a historic border town. Upon arrival at the camping base, guests will enjoy Desert Dinner Experience with a self-service hot pot and unlimited beer and beverages. After a satisfying meal and a moment of rest, it's time to indulge in exciting desert activities that follow. Join in the lively desert atmosphere by dancing and singing around the campfire, and experience the thrill of ATV four-wheel off-road motorcycles for unlimited rides, sandboarding, a fireworks display, and a bonfire party.

*\*\*Optional tour: Desert Photography Tour (include outfit selection, makeup and photoshoot) (RMB 399-799/per pax)*

**DAY 7: DUNHUANG WESTERN ROUTE IN-DEPTH EXCLUSIVE ITINERARY PRESENTATION (B/L/D)**

**Hotel: Dunhuang Fuhua International Hotel or Dunhuang Shazhou Jinghua Hotel or Dunhuang Shangheyijing Hotel or similar**

After breakfast, visit Yumen Pass located about 90 kilometers northwest of Dunhuang City in Gansu Province, deep in the Gobi Desert, Yumen Pass, along with Yangguan Pass, is known as the "Twin Pearls of Hanse". Renowned as the "Gateway to the Western Regions" and famous for the phrase "Spring winds do not pass through", this ancient rammed earth fortress. Next, proceed Dunhuang Yardang National Geopark (includes shuttle bus) divided into southern and northern sections. It features Quaternary geological relics and natural desert landscapes primarily shaped by wind erosion. Notable attractions include Dunhuang Devil's Town, Golden Lion Welcoming Guests, and the Cave Man Head.

**DAY 8: DUNHUANG – KUALA LUMPUR (B/L/-) DNH/KUL OD8639 2245-0550+1**

After breakfast, visit to Mogao Caves (including shuttle bus + Thousand-Year Mogao + Dreamlike Buddhist Palace + 8 Caves). Also known as the "Caves of a Thousand Buddhas," the Mogao Caves are one of the three major Buddhist cave art treasures in China. They are hailed as the "most valuable cultural discovery of the 20th century" and referred to as the "Louvre of the East." Located at the western end of the Hexi Corridor in Dunhuang, the caves are famous worldwide for their exquisite murals and sculptures.

**\*\*Optional Tour: Le Dong Dunhuang Performance (RMB298/pax)**

*\*\*Note: Customers who do not participate in the optional tour can visit the Shazhou Night Market on their own.*

**DAY 9: ARRIVE AT KUALA LUMPUR**

**Remarks.** Revisions, if any, in itinerary are subject to the Company's Terms and Conditions. In particular, the Customer is requested to note the following: Itinerary may be subject to change due to circumstances beyond the Company's control. Accommodation in designated cities is subject to room availability. Sequence of itinerary may be subject to change. Different tour groups may be merged. Proposed changes, if any, that are not accepted will be subject to the refund provisions set out in the Terms and Conditions.