

4D3N | LABUAN | RUSUKAN ISLAND

No Shopping Stop & No Optional

4天3晚 | 纳闽乐不完 | 鲁苏甘岛

无购物站 & 无自费

DUTY FREE SHOPPING . 免税购物 . DUTY FREE SHOPPING . 免税购物

HIGHLIGHTS

特色行程

打卡圣地

POPULAR
PHOTO
SPOTS



• Labuan Museum

• 纳闽博物馆

• Chimney Museum

• 烟囱

• World War II Memorial Park

• 2战纪念碑公园

• Labuan Financial Park

• 纳闽免税商场

DUTY FREE SHOPPING . 免税购物 . DUTY FREE SHOPPING . 免税购物

LOVELY
VACATION
WHERE HAPPINESS BEGINS

TOUR CODE: 4LBU

| UPDATED: 11 FEB 2025

第一天

亚庇 → 纳闽

📷 | (X) (L) (D)

- 抵达纳闽。
- 纳闽市区游：前往参观 –
- **纳闽博物馆** - 一个从战前建筑改建而成的博物馆，展示了纳闽经历二战前后，文莱国统治时期，英国殖民时期及被归纳为马来西亚联邦直辖区的珍贵历史及文物。

二战纪念碑公园 - 一座有英联邦国纪念坟场管理委员会管理的纪念公园，环境整洁清幽，阳光普照，3908个阵亡的二战战士长眠于此，是马来西亚国内最大的二战纪念公园，也是岛上非去不可的景点。

烟囱 - 位于纳闽岛北端的神秘烟囱是纳闽的地标。建于1800年左右，高108米，经考古学家考察后仍无法确定其用途。既非灯塔亦非燃煤之用，为烟囱披上了一层神秘面纱。

纳闽免税商场 - 纳闽是马来西亚免税购物天堂之一，凡是进口烟，酒，巧克力，香水，布料，陶瓷餐具等，价廉物美，一定可以买到属意的手信。

- 登记入住酒店。
- 晚餐接送。

第二天

鲁苏甘岛

📷 | (B) (L) (D)

- 享用酒店早餐。
- 酒店大厅集合。前往码头。
- 乘坐40分钟快艇前往鲁苏甘岛参与浮潜活动。

- **鲁苏甘岛** - 位于纳闽岛西南部的鲁苏甘岛(含浮潜装备)。沿途欣赏蔚蓝美丽的海景，密集停泊在文莱湾的船，与及纳闽岛沿海的石油与天然气工业，形成了一道壮观的风景线。抵达鲁苏甘岛后，由专人带领进行浮潜活动，观赏大面积的漂亮珊瑚，鱼群及龙虾等，充分享受原始的热带岛屿，清澈见底的海水，清凉的海风，洁白的沙滩，茂密的树林，随处可见的鱼群，色彩缤纷的珊瑚，千年岩石地貌，让人仿佛置身于世外桃源，流连忘返。

- 返回酒店休息。
- 晚餐接送。

第三天

纳闽

📷 | (B) (X) (X)

- 全天自由活动。

第四天

纳闽 → 亚庇

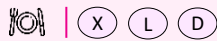
📷 | (B) (X) (X)

- 享用酒店早餐。
- 送往机场。
- 返回美丽家园。



DAY 1

KOTA KINABALU → LABUAN



- Arrive Labuan.
- Labuan Sightseeing Tour : Visit to –
- **Labuan Museum** – A Museum converted from a pre-war building, it displays the precious history and culture relics of Labuan before and after World War II, the period of Brunei rules, the British Colonial period, and the federal territory of Malaysia.

World War II Memorial Park –

A Memorial Park managed by the Commonwealth Memorial Cemetery Management Committee. The environment is clean, quite and sunny. 3908 fallen World War II soldiers are buried here. It is the largest World War II memorial park in Malaysia and a must visit attraction on the island.

Chimney Museum- The mysterious chimney located at the northern end of Labuan Island is a landmark of Labuan. It was build around 1800 and is 108 meters high. After investigation of archeologists, it is still not possible to determine its purpose. It is neither a light house not a coal-fire one. It is made a layer of mystery for the chimney.

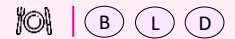
Labuan Financial Park – Labuan is one of the duty-free shopping paradise in Malaysia. All imported tobacco, wine, chocolate, perfume, fabrics, ceramic tableware, etc. are cheap and high quality and you can definitely buy your favourite souvenirs.

- Check in to Hotel.
- Transfer for Dinner and return.



DaAY 2

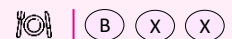
RUSUKAN ISLAND



- Enjoy Hotel breakfast.
- Meet at Hotel lobby and depart to Jetty.
- Take 40mins boat ride to Rusukan Island for snorkeling activities.
- **Rusukan Island** – An Island located at South West of Labuan Island. (Snorkeling equipment included). Along the way you can enjoy the beautiful blue seascape, the densely packed ships anchored in Brunei Bay, and the oil and gas industry along the coast of Labuan Island, forming a spectacular scenery. After arrived, you will be led by a dedicated crew for snorkeling activities to see a large area of beautiful corals, fish and lobsters, etc. and fully enjoy the pristine tropical island, crystal clear water, cool sea breeze, white sandy beach, lush the forests, fish everywhere, colorful corals, and thousand year-old rock formations make people feel themselves are in paradise and never want to leave.
- Return to Hotel for rest.
- Transfer for Dinner and return.

DAY 3

LABUAN

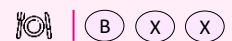


- Whole day Free at own leisure.

DAY 4

LABUAN

→ KOTA KINABALU



- Enjoy Hotel breakfast.
- Check out and sending transfer.
- Home Sweet Home.



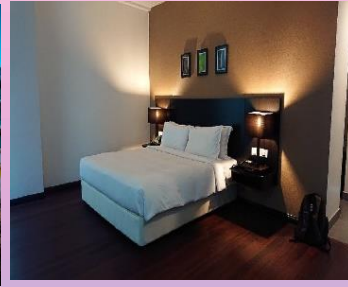


3★
**Labuan Point
Hotel**
纳闽波因特酒店

3★
Aifa Hotel



3★
**Palm Beach
Resort & Spa**
棕榈滩度假村及
水疗中心



3★
Lazenda Hotel
拉森达酒店

5★
**Tiara Hotel
Labuan**
纳闽迪拉酒店



酒店详情 HOTEL INFO

当地4-5星住宿星级 (最后确认于同级酒店为准)

Hotel based on local 4-5 star or Onsen Class (Final confirmation on similar standard)

Travelling Period: 01 Jan – 31 Dec 2025

Twin / Triple Room Sharing (MYR) PER PAX (双人/三人一房)

HOTEL TYPE	2-4	5-9	10-14	15-20	SINGLE SUPP
Labuan Point Hotel (3*) 纳闽波因特酒店	1640	1440	1300	1240	440
Aifa Hotel (3*)	1600	1400	1270	1200	540
Palm Beach Resort & Spa (3*) 棕榈滩度假村及水疗中心	1700	1500	1400	1270	570
Lazenda Hotel (3*) 拉森达酒店	1700	1510	1400	1270	570
Tiara Hotel Labuan (5*) 纳闽迪拉酒店	1870	1670	1600	1540	770

餐食 MEALS INFO

天数 DAY	早餐 BREAKFAST	午餐 LUNCH	晚餐 DINNER
1	X	当地餐厅 Local Restaurant	当地餐厅 Local Restaurant
2	酒店 Hotel	岛上自助餐 Island Buffet	当地餐厅 Local Restaurant
3	酒店 Hotel	X	X
8	酒店 Hotel	X	X

TERMS & CONDITIONS

- Rates inclusive of Airport / Jetty return transfer, 3 nights Hotel Accommodation (include breakfast), Meals stated in itinerary, Transportation, Entrance fees and Tour Guide service.
- Hotel rates quoted based on Twin Sharing. For Triple room, 3rd bed will be rolling bed.
- Children below 12yrs old with bed or extra bed will be charged same rate as adult, children without bed are charged 60% of adult's rate. Childred below 3yrs old are free of charge.
- For group below 8 persons, driver cum guide service will be provided.
- All rates valid till 31st August 2024, Subject to change without prior notice. (Especially for Peak Season: Christmas, New Year, Chinese New Year, rates will be quoted separately).
- For group with 15 persons, free of charge for one professional Tour Leader (based sharing room with guest or triple room). Tour Leader with single room will be charged for the single supplement. No free for guests.
- All reservations / bookings must be confirmed 14days before arrival date, with provide all guests' passport particulars, number of persons, arrival date and time, full payment done, otherwise the reservations / bookings will be automatically cancelled.
- Rates inclusive of hotel tourism tax.

Rates exclusive of:

- Any air ticket / ferry ticket / bus tickets arriving or departing from Labuan.
- All entry visas.
- Tippings RM10 per person per day.

条款与条件

- 价格包含机场 / 码头来回接送, 3晚酒店住宿 (含早餐), 行程内所列明餐饮, 交通, 景点如门票及导游服务。
- 酒店客房报价皆以标准房型为准, 3人一房之预订, 第三个床位多为折叠床。
- 占床 / 加床 12岁以下儿童与成人同价, 不占床儿童每人缴 60% 成人价格。3岁以下儿童免费。
- 8人以下之团体, 仅提供司机兼导游服务。
- 价格有效期至 2024年8月31日, 价格如有调整, 恕不另行通知。(如遇圣诞节, 元旦, 农历新年等高峰期, 价格另议)。
- 每15人团队免一位专业领队地接费用。(与客人共房形式或三人房) 如需单独用房, 则需增加一笔单房差费用。客人无FOC。
- 所有预订必须在团队抵达14天前确认, 提供我方游客护照资料, 人数, 抵达日期与时间, 并足额支付, 否则自动取消预订。
- 价格包含酒店客房旅游税。

价格不含:

- 任何抵达或离开纳闽的机票 / 船票 / 车票。
- 所有入境签证。
- 小费马币10 每人每天。



Contact us: