



5D4N
Chiang Mai / Pai
/ Mae Hong Son
Thailand

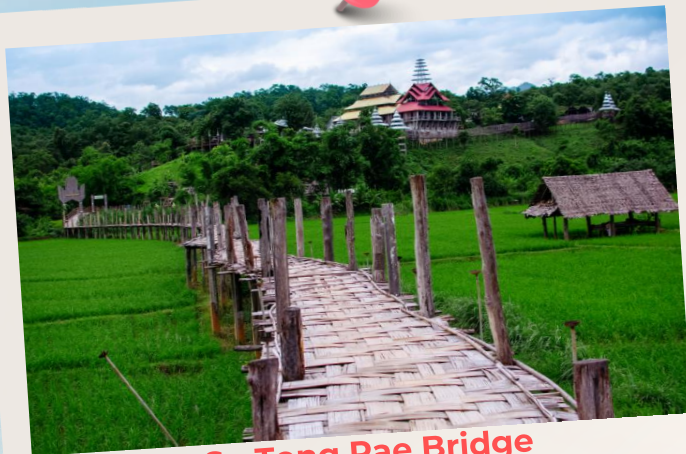
TRAVELLING PERIOD : 01 APR 2024 TO 31 OCT 2024
GROUND ARRANGEMENT ~ (T/C GRD-5TCM) | UPDATED: 09JUL2024

行程亮点

Highlights



Baan Rak Thai for sunrise with Boat Trip
爱泰村船游看日出



Su Tong Pae Bridge
苏东佩吉祥桥



Yunlai View point for sunrise with Brunch
清晨云南山地村观景台观看日出(含早茶)



Long Neck Village
长颈族村



Tham Lod Cave - Bamboo Rafting
探落蝙蝠洞-竹筏



Wat Pha that Doi Kong Mu
帕塔多孔穆寺

5D4N Chiang Mai/ Pai/ Mae Hong Son Travel Itinerary

DAY 1

—Arrival Chiang Mai

(D)

Meet at the Arrival at Chiang Mai International Airport. welcome to Chiang Mai meet & greet with local guide, then visit:

- City Orientation of Chiang Mai city Walls 【清邁古城牆】
- Three Kings Monument 【三王紀念碑】
- Chedi Luang Temple 【契迪龍寺】

DAY 2

—Chiang Mai - Pai

(B / L / D)

- Doi Suthep included automatic tram 【雙龍寺含纜車】
- Transfer to Pai 【驅車前往拜縣】
- Pai World War II Memorial Bridge 【參觀第二世界大戰後遺留的紀念橋】
- Love of Pai Café 【愛拜咖啡廳】
- Pai Canyon 【拜縣峽谷賞日落】
- Pai Walking Street and enjoy local food @ Pai Night market 【拜縣步行街】

DAY 3

—Pai – Mae Hong Son

(B / Brunch / L / D)

- Yunlai View point for sunrise and cloud sea with Brunch 【清晨雲南山地村觀景台觀看日出(含早茶)】
- Tham Lod Cave – Bamboo Rafting 【參觀探落蝙蝠洞-竹筏】
- Transfer to Mae Hong Son 【驅車前往湄宏頌】
- Wat Pha that Doi Kong Mu 【帕塔多孔穆寺】
- Visit Su Tong Pae Bridge @ Walking Street 【參觀蘇東佩吉祥橋 @ 步行街】

DAY 4

—Mae Hong Son - Pai – Chiang Mai

(B / L / D)

- Baan Rak Thai – Enjoy Sunrise included Boat Trip 【前往愛泰村看日出-浪漫泰國小瑞士+船游】
- Transfer back to Chiang Mai 【返回清邁】
- Long Neck Village 【長頸族村】
- Inverted House 【途中短暫停留拍照打卡點-倒置屋】

DAY 5

—Chiang Mai Departure

(B)

- Breakfast at hotel and check out.
- Transfer to Chiang Mai international airport for departure with sweet memories.

GRD-5TCM 5D4N Full Board Package

Validity Date : 01 Apr 2024 - 31 Nov 2024

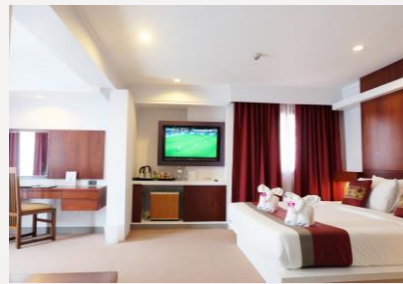
Package Rate (MYR) Per pax

Description	2-5	6-9	10-14	15-up	SGL
2N Chiang Mai Star Hotel (4*) 1N Belle Villa Resort 1N Imperial MHS Hotel	3218	2408	1888	1838	450
2N Chiang Mai Duang Tawan Hotel (4*) 1N Belle Villa Resort 1N Imperial MHS Hotel	3228	2418	1898	1848	460
2N Chiang Mai NOVOTEL (4*) 1N Belle Villa Resort 1N Imperial MHS Hotel	3308	2498	1978	1928	540

Package Details

- Min 2 pax adult (GV2) per booking.
- Tour packages are only applied for Malaysian passport holder.
- Prices are quoted per person in RM & subject to change without prior notice
- Meal stated as per itinerary.
- Compulsory tipping for tour guide RM14 per pax per day.
- English speaking guide during the tour, mandarin speaking guide is subject to availability
- **Full Payment** upon booking confirmation.
- Child (02-12 yrs. old) Twin share 100% adult rate, Extra bed 75% of adult rate and sharing bed with parents 50% of adult rate
- Infant 24 months or below – FOC
- Back out period festival surcharge Songkran, LoyKhong , Peak season ,Christmas , New year , Chinese new year
- Room accommodation head count only count on guest, non-guest will not count into room accommodation Hotel rooms are subject to availability. If selected hotel unavailable, others similar accommodation will be provided with different price apply (if any).
- Peak Season Date & Surcharge Subject to change without prior notice
- The Management reserves the right to alter, amend, delete or add to these conditions or withdraw the package at any time without prior notice.

CHIANG MAI HOTEL

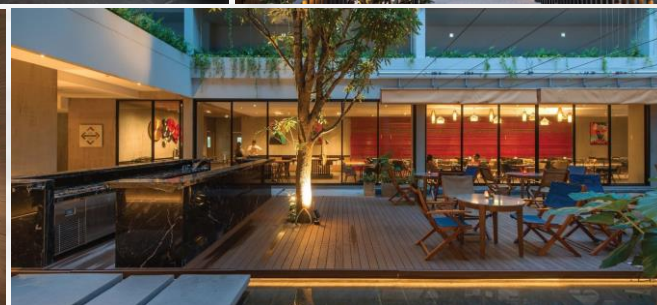
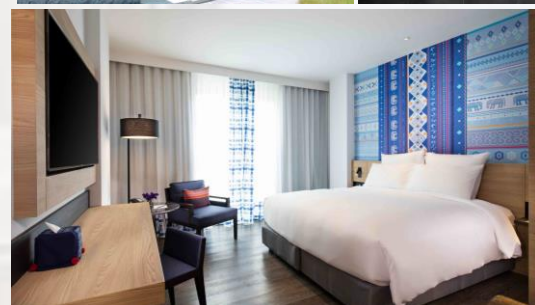


**Deluxe 4*
Star Hotel**

**Superior 4*
Duangtawan
Hotel**



**Standard 4*
NOVOTEL**



PAI HOTEL / MAE HONG SON HOTEL

**Belle Villa
Resort**



**Imperial MHS
Hotel**