



5D4N Chiang Mai / Chiang Rai Thailand

TRAVELLING PERIOD : 01 APR 2024 TO 31 OCT 2024
GROUND ARRANGEMENT ~ (T/C GRD-5TCR) | UPDATED: 24JUL2024

行程亮点

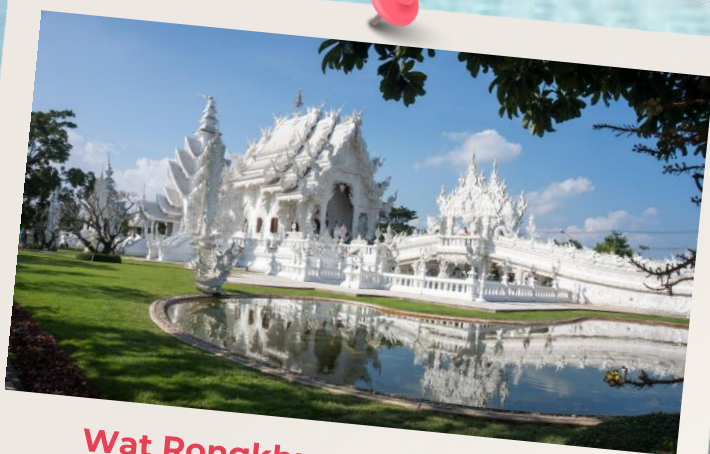
Highlights



Hi-Tea with Thai Costume
下午茶和體驗傳統泰式服裝



Private Tour
专属私人团



Wat Rongkhun- white temple
龙坤艺术庙 (白庙)



Long Neck Village
長頸族村



Elephant Ridding
體驗騎大象



Wat Rong Sue Ten - Blue Temple
清莱蓝庙

5D4N Chiang Mai / Chiang Rai Travel Itinerary

DAY 1

—Arrival Chiang Mai

(D)

Meet at the Arrival at Chiang Mai International Airport. welcome to Chiang Mai meet & greet with local guide, then visit:

- City Orientation of Chiang Mai city Walls 【清邁古城牆】
- Three Kings Monument 【三王紀念碑】
- Chedi Luang Temple 【契迪龍寺】
- Doi Suthep included automatic tram 【雙龍寺含纜車】

DAY 2

—Chiang Mai

(B / L / Hi-Tea / D)

- Elephants at Work enjoy elephant shows and experience Elephant Ridding 【前往大象營觀賞大象表演和體驗騎大象】
- Long Neck Village 【長頸族村】
- Enjoy Hi-Tea with Thai Costume 【享用下午茶和體驗傳統泰式服裝】
- Royal Flora Garden (Include tram car) 【皇家花園含電瓶車】

DAY 3

—Chiang Mai - Chiang Rai

(B / L / D)

- Transfer to Chiang Rai 【前往清萊】
- Wat Rongkhun- white temple 【參觀龍坤藝術廟（白廟）】
- Golden Triangle (Thailand /Myanmar/Laos border) take a boat trip along Mae Khong River to see panorama view and people life 【黃金三角洲 + 船游湄公河】
- Opium house 【鴉片屋】
- Wat Rongkhun- white temple 【參觀龍坤藝術廟（白廟）】

***** Optional Tour 自費項目 *****

- Mae Sai Town (Thailand / Myanmar Border) THB1800 / pax 【泰緬邊境每人泰銖1800】
- Enter Laos Island THB 500 /pax 【入境寮國島嶼每人泰銖500】
- Sky Bridge THB 500/pax 【清邁新地標(天空玻璃橋)每人泰銖500】

DAY 4

—Chiang Rai – Chiang Mai

(B / L / D)

- Wat Rong Sue Ten-Blue Temple 【清萊藍廟】
- Huay Pla Kang – Fortune Pagoda 【大觀音匯巴杠寺】
- Back to Chiang Mai town
- Mae Kachan Hot Spring 【Mae Kachan溫泉】
- Bor Sang Handicraft 【手工藝術村】
- Night Market 【夜市】

DAY 5

Chiang Mai Departure

(B)

- Breakfast at hotel and check out.
- Transfer to Chiang Mai international airport for departure with sweet memories.

GRD-5TCR 5D4N Full Board Package

Validity Date: 01 Apr 2024 – 31 Oct 2024

Package Rate (MYR) Per pax

Description	2-5	6-9	10-14	15-up	SGL
3N Chiang Mai Star Hotel (4*) 1N Chiang Rai M Boutique	2898	2208	1738	1678	390
3N Chiang Mai Duang Tawan Hotel (4*) 1N Chiang Rai M Boutique	2908	2218	1748	1688	400
3N Chiang Mai NOVOTEL (4*) 1N Chiang Rai M Boutique	3038	2338	1868	1808	520

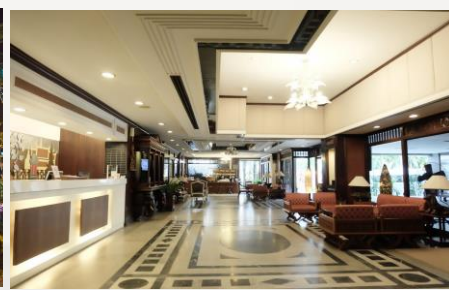
Chiang Rai Hotel Upgrade:

- Wiang Inn Hotel (Superior Room) – RM 40 per pax
- The Heritage Chiang Rai Hotel (Superior Room) – RM 70 per pax

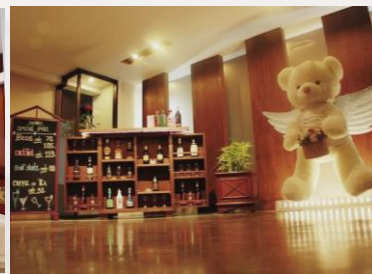
Package Details

- Min 2 pax adult (GV2) per booking.
- Tour packages are only applied for Malaysian passport holder.
- Prices are quoted per person in RM & subject to change without prior notice
- Meal stated as per itinerary.
- Compulsory tipping for tour guide RM14 per pax per day.
- English speaking guide during the tour, mandarin speaking guide is subject to availability
- **Full Payment** upon booking confirmation.
- Child (02-12 yrs. old) Twin share 100% adult rate, Extra bed 75% of adult rate and sharing bed with parents 50% of adult rate
- Infant 24 months or below – FOC
- Back out period festival surcharge Songkran, LoyKhong , Peak season ,Christmas , New year , Chinese new year
- Room accommodation head count only count on guest, non-guest will not count into room accommodation Hotel rooms are subject to availability. If selected hotel unavailable, others similar accommodation will be provided with different price apply (if any).
- Peak Season Date & Surcharge Subject to change without prior notice
- The Management reserves the right to alter, amend, delete or add to these conditions or withdraw the package at any time without prior notice.

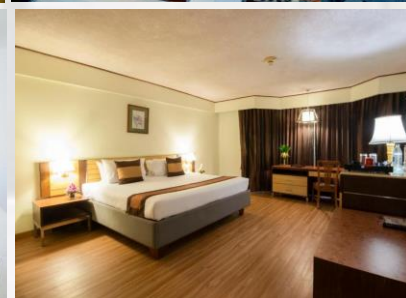
CHIANG MAI HOTEL



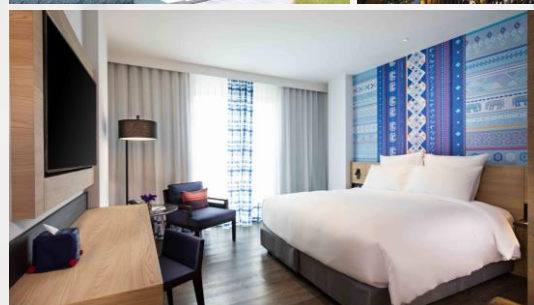
**Deluxe 4*
Star Hotel**



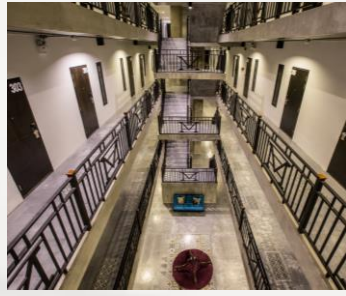
**Superior 4*
Duangtawan
Hotel**



**Standard 4*
NOVOTEL**



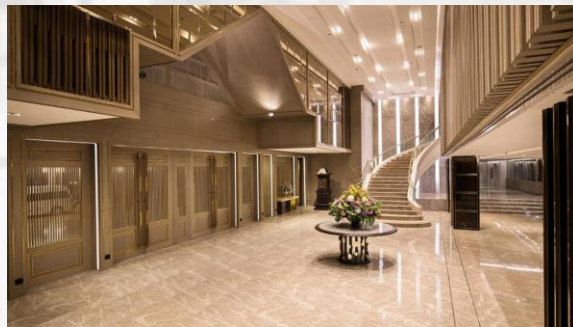
CHIANG RAI HOTEL



**Standard 4*
M Boutique
Resort**



**Superior 4*
Wiang Inn
Hotel**



**Superior 4*
The Heritage
Hotel**

