

**4D3N**  
**Chiang Mai /**  
**Chiang Rai**  
**Thailand**



# 行程亮点

## Highlights



**Hi-Tea with Thai Costume**  
下午茶和體驗傳統泰式服裝



**Private Tour**  
专属私人团



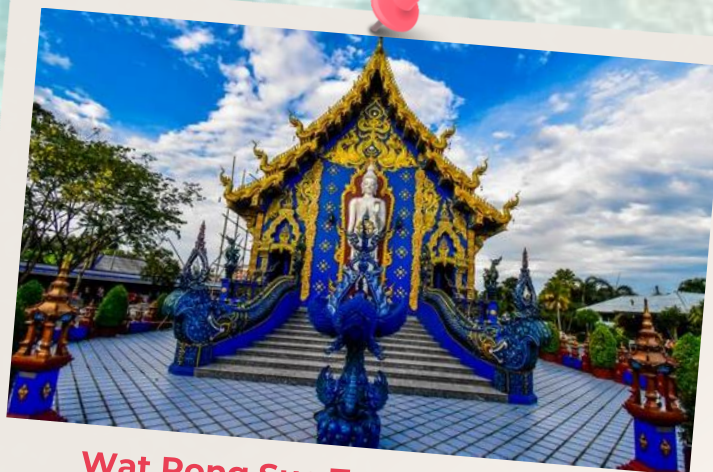
**Wat Rongkhun- white temple**  
龙坤艺术庙 (白庙)



**Long Neck Village**  
長頸族村



**Elephant Ridding**  
體驗騎大象



**Wat Rong Sue Ten-Blue Temple**  
清莱蓝庙

# 4D3N

## Chiang Mai / Chiang Rai

### Travel Itinerary

#### DAY 1

Arrival Chiang Mai

(D)

Meet at the Arrival at Chiang Mai International Airport. welcome to Chiang Mai meet & greet with local guide, then visit:

- City Orientation of Chiang Mai city Walls 【清邁古城牆】
- Three Kings Monument 【三王紀念碑】
- Chedi Luang Temple 【契迪龍寺】
- Mae Kha Canal Japanese 【清邁小樽日本文化步行街】

#### DAY 2

Chiang Mai – Chiang Rai

(B / L / Hi-Tea / D)

- Elephant camp for show and 30 Mins Elephant Ridding 【大象營表演和體驗騎大象】
- Long Neck Village 【長頸族村】
- Enjoy Hi-Tea with Thai Costume 【享用下午茶和體驗傳統泰式服裝】
- Bor Sang Handicraft 【手工藝術村】
- Transfer to Chiang Rai 【返回清萊】

#### DAY 3

Chiang Rai – Chiang Mai

(B / L / D)

- Golden Triangle (Thailand /Myanmar/Laos border) take a boat trip along Mae Khong River to see panorama view and people life 【黃金三角洲 + 船游湄公河】
- Opium house 【鴉片屋】
- Wat Rongkhun- white temple 【參觀龍坤藝術廟-白廟】
- Wat Rong Sue Ten-Blue Temple 【清萊藍廟】
- Short trip to Mae Kachan Hot Spring 【中途停靠Mae Kachan溫泉】
- Back to Chiang Mai town

\*\*\*\*\* Optional Tour 自費項目 \*\*\*\*\*

- Mae Sai Town (Thailand / Myanmar Border) + Enter to Myanmar THB 1800 /pax  
【美賽城 - 進入泰緬邊境 + 入境緬甸一人泰銖 1800】
- Enter to Laos Island THB 500 / pax 【進入寮國島嶼一人泰銖 500】

#### DAY 4

Chiang Mai Departure

(B)

- Breakfast at hotel and check out.
- Doi Suthep included automatic tram 【雙龍寺含纜車】

Transfer to Chiang Mai international airport for departure with sweet memories.

## GRD-4TCR 4D3N Full Board Package

Validity Date: 01 Apr 2024 – 31 Oct 2024

### Package Rate (MYR) Per pax

Description	2-5	6-9	10-14	15-up	SGL
<b>2N Chiang Mai Star Hotel (3*) 1N Teak Garden</b>	2288	1748	1388	1338	280
<b>2N Chiang Mai Duang Tawan Hotel (4*) 1N Teak Garden</b>	2298	1758	1398	1348	290
<b>2N Chiang Mai NOVOTEL (4*) 1N Teak Garden</b>	2378	1838	1468	1428	370

### **Chiang Rai Hotel Upgrade:**

- a) Wiang Inn Hotel (Superior Room) – RM 30 per pax
- b) Heritage CEI (Superior Room) – RM 70 per pax

### **Package Details**

- Min 2 pax adult (GV2) per booking.
- Tour packages are only applied for Malaysian passport holder.
- Prices are quoted per person in RM & subject to change without prior notice
- Meal stated as per itinerary.
- Compulsory tipping for tour guide RM14 per pax per day.
- English speaking guide during the tour, mandarin speaking guide is subject to availability
- **Full Payment** upon booking confirmation.
- Child (02-12 yrs. old) Twin share 100% adult rate, Extra bed 75% of adult rate and sharing bed with parents 50% of adult rate
- Infant 24 months or below – FOC
- Back out period festival surcharge Songkran, LoyKhong , Peak season ,Christmas , New year , Chinese new year
- Room accommodation head count only count on guest, non-guest will not count into room accommodation Hotel rooms are subject to availability. If selected hotel unavailable, others similar accommodation will be provided with different price apply (if any).
- Peak Season Date & Surcharge Subject to change without prior notice
- The Management reserves the right to alter, amend, delete or add to these conditions or withdraw the package at any time without prior notice.

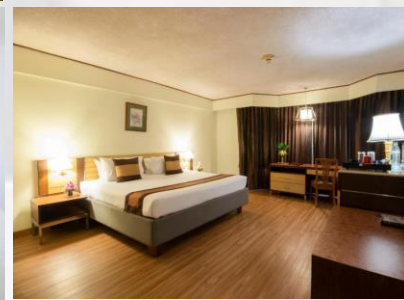
# CHIANG MAI HOTEL



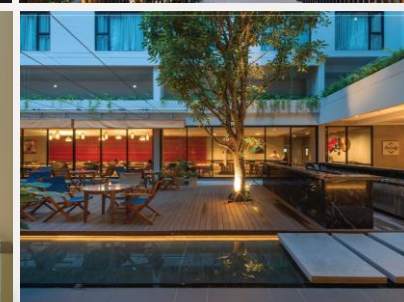
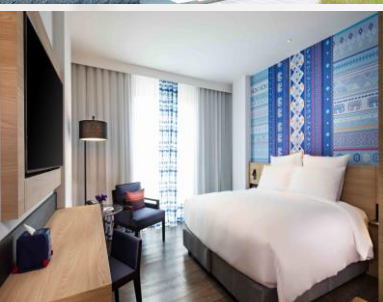
**Deluxe 3\*  
Star Hotel**



**Superior 4\*  
Duangtawan  
Hotel**



**Standard 4\*  
NOVOTEL**



# CHIANG RAI HOTEL



**Standard 4\*  
Teak Garden**



**Superior 4\*  
Wiang Inn  
Hotel**



**Superior 4\*  
The Heritage  
Hotel**

