

7D5N

中国四川  
CHINA SICHUAN

LOVELY  
VACATION  
WHERE HAPPINESS BEGINS

走进大自然的魔法世界  
IMMERSED IN THE MAGICAL WORLD OF NATURE

# 九寨沟

踏足川西秘境，漫步于九寨沟，  
仿若置身于仙境之中，恍若随时会遇见神话传说中的精灵与仙女，  
每一处风景都是一首动人的诗篇。

徜徉黄龙感受壮丽仙境，探访成都品味美食文化，  
探索都江堰古老智慧，登顶峨眉山俯瞰群峰环绕。

## 九寨沟+黄龙+成都+都江堰+峨眉山

JIUZHAIGOU + HUANGLONG + CHENGDU + DUJIANGYAN + MT EMEI

TOUR CODE: 7CJH3

无购物站 NO SHOPPING STOP



往返机票

RETURN AIRFARE



酒店住宿

ACCOMMODATION



膳食餐饮

MEALS



交通接送

TRANSPORTATION



导游服务

TOUR GUIDE



景区门票

ADMISSION TICKET



特色景点

ATTRICTIONS



# 特色亮点

## TOUR HIGHLIGHT

TOUR BY LOVELY VACATION (TOUR CODE: 7CJH3)



世界遗产名录和国家重点5A级  
**黄龙风景名胜区**

**Huanglong Scenic Area:** UNESCO World Heritage Site and National 5A-Level Tourist Attraction



世界遗产名录和国家重点5A级  
**九寨沟风景名胜区**

**Jiuzhaigou Scenic Area:** UNESCO World Heritage Site and National 5A-Level Tourist Attraction



世界文化遗产之一  
**乐山大佛 (含船游)**

**Leshan Giant Buddha:** UNESCO World Heritage Site (Including Boat Tour)

**特别安排**



**尊享体验**  
**2+1 VIP游览巴士**

**SPECIAL ARRANGEMENT**  
**VIP Premium 2+1 Executive Coach**

**特别升级**



**五钻峨眉山御泉湾温泉酒店**  
**(含温泉门票)**

**SPECIAL UPGRADE**  
**Emeishan Royal Spring Hotel**  
(Including Hot Spring Tickets)

**特别升级**



**升级2晚全新五钻**  
**九寨沟丽呈华廷度假酒店**

**SPECIAL UPGRADE 2NIGHTS**  
**Brand-new 5-star : Jiuzhaigou Licheng Huating Resort**

**特别安排**



**峨眉自助烧烤 +**  
**酒水任喝**

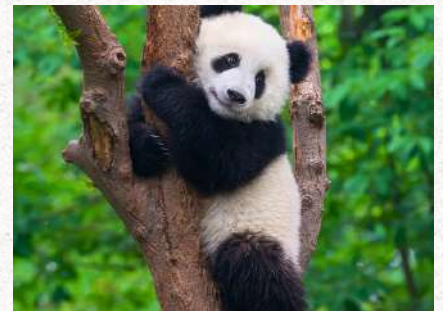
**SPECIAL ARRANGEMENT**  
**Emeishan BBQ Buffet + Free-flow Drinks**

**特别安排**



**成都的传统文化和美食特色**  
**川剧变脸鸳鸯火锅**

**Chengdu's Tradition & Cuisine:**  
**Sichuan Opera Face Changing & Yin Yang Hotpot**



**都江堰熊猫乐园**  
**(含电瓶车)**

**Dujiangyan**  
**China Giant Panda Garden**  
(Buggy Incl)



# 景点特色

ATTRACTIONS FEATURES

TOUR BY LOVELY VACATION (TOUR CODE: 7CJH3)



## 九寨沟 JIU ZHAI GOU

位于中国四川省阿坝藏族羌族自治州。九寨沟被誉为“人间瑶池”，以其如诗如画的景色闻名于世。碧绿如玉的湖泊倒映着周围连绵的山峦，瀑布如银练般垂泻而下，五彩斑斓的森林在四季变幻中展现出不同的色彩，每一处风景都像是一幅幅令人陶醉的画卷，让人流连忘返。

Jiuzhaigou is acclaimed as a "fairyland on earth" for its picturesque scenery. Its jade-like turquoise lakes reflect the surrounding rolling mountains, while waterfalls cascade down like silver threads. The colorful forests showcase a kaleidoscope of hues throughout the changing seasons, each landscape resembling an enchanting painting that captivates and mesmerizes visitors.



## 黄龙风景区 HUANGLONG SCENIC AREA

黄龙风景区位于中国四川省阿坝藏族羌族自治州，是一处以多姿多彩的钙化地貌景观而闻名的自然保护区。这里有雄奇险峻的山峦，翠绿碧波的湖泊，绵延不绝的钙化地形，以及错落有致的瀑布。游览其中，仿佛进入了一个仙境般的世界，景色美不胜收，令人心驰神往，留连忘返。

The Huanglong Scenic Area, located in the Aba Tibetan and Qiang Autonomous Prefecture of Sichuan Province, China, is a renowned natural reserve celebrated for its diverse and colorful calcified landscape. With majestic and rugged mountains, emerald green lakes, endless stretches of calcified terrain, and intricately arranged waterfalls, the scenery here is truly breathtaking and captivates the hearts and minds of all who visit.



### 双龙海瀑布 SHUANGLONGHAI WATERFALL

双龙海瀑布是九寨沟最新的景点，坐落在九寨沟风景区内，以其壮丽的瀑布景观和清澈见底的湖水而闻名。瀑布得名于其独特的形态，两股水流如双龙倒挂，从高山崖壁倾泻而下，气势恢宏。在阳光的照射下，水流散发出耀眼的光芒，形成了令人震撼的壮美景观。

Shuanglonghai Waterfall is the newest attraction in Jiuzhaigou, situated within the scenic area and renowned for its majestic waterfall landscapes and crystal-clear lake waters. The waterfall derives its name from its unique form, resembling two dragons hanging upside down as water cascades down from the high mountain cliffs, creating a spectacular and awe-inspiring sight.



### 叠溪海子 DIXI HAIZI LAKE

叠溪海子是四川阿坝藏族羌族自治州的一处高山湖泊，位于中国西南部的川藏高原上。这片湖泊因其清澈的湖水和壮丽的雪山景观而闻名。湖水呈碧绿色，倒映着周围群山的峻峭和蓝天的明净。叠溪海子是一个迷人的自然景观，吸引着来自世界各地的游客前来欣赏其美丽的风景。

Diexi Haizi Lake is a high-altitude lake located in the Aba Tibetan and Qiang Autonomous Prefecture of Sichuan Province, on the southwestern edge of the Tibetan Plateau in China. This lake is renowned for its crystal-clear waters and magnificent snow-capped mountain scenery. The lake water appears emerald green, reflecting the rugged mountains surrounding it and the clear blue sky above.



# 景点特色

ATTRACTIONS FEATURES

TOUR BY LOVELY VACATION (TOUR CODE: 7CJH3)



## 都江堰熊猫乐园 DUJIANGYAN PANDA PARADISE ●

都江堰熊猫乐园是一个位于四川都江堰市的熊猫保护基地，致力于保护和研究中国国宝大熊猫。这个乐园拥有大片竹林和草坪，为熊猫们提供了舒适的栖息环境。游客可以在这里近距离观赏可爱的大熊猫，观察它们的日常生活和饮食习性，还可以参与一些与熊猫相关的互动活动，例如志愿者服务和照相馆。

Dujiangyan Panda Paradise is a panda conservation base located in Dujiangyan City, Sichuan Province, dedicated to the protection and research of China's national treasure, the giant panda. This paradise features vast bamboo forests and grasslands, providing a comfortable habitat for the pandas. Visitors can get up close to these adorable pandas, observe their daily lives and eating habits.



## ● 乐山大佛 LESHAN GIANT BUDDHA

乐山大佛位于中国四川省乐山市岷江东岸的峨眉山脚下，是世界上最大的一尊摩崖造像。大佛背倚峨眉山，俯瞰岷江，气势恢宏，成为乐山的标志性景点之一。漫舟岷江仿佛穿越时光，船行沿途可以近距离观赏大佛的壮丽身姿，感受岷江两岸的自然风光和历史文化，领略千年古刹和壁立千仞的峭壁。

The Leshan Giant Buddha is the world's largest cliff-carved Buddha statue. Standing as a majestic symbol of Leshan, it overlooks the Minjiang River and offers a breathtaking view. Taking a boat ride along the river provides a unique perspective of the Buddha's magnificent stature and allows visitors to appreciate the natural beauty and historical significance of the area.



# 景点特色

ATTRACTIONS FEATURES

TOUR BY LOVELY VACATION (TOUR CODE: 7CJH3)



## 报国寺 BAOGUO TEMPLE ●

报国寺位于中国四川省峨眉山市，是一座历史悠久的佛教寺庙，建于唐代。寺内保存着古老的建筑和丰富的文物，其中包括各种佛像、经文和碑刻等珍贵文物。寺庙的建筑风格融合了中国传统的寺院建筑特色，庄严肃穆。报国寺作为中国重要的佛教圣地之一，吸引着大量的信徒和游客前来朝拜和参观。

Baoguo Temple is an ancient Buddhist temple located in Emeishan City, Sichuan Province, China. Dating back to the Tang Dynasty, it is one of the renowned Buddhist temples in China. The temple preserves ancient architecture and rich cultural relics, including Buddha statues and scriptures. With a solemn and serene atmosphere, the temple has become an important destination for pilgrims and tourists alike.



## ● 锦里古街 JINLI ANCIENT STREET

一条具有悠久历史的古老街区，以其独特的古建筑和传统文化而闻名。步入锦里古街，仿佛穿越时光回到了古代，古色古香的建筑、古朴的街巷和传统的手工艺品让人感受到了古代成都的繁华与风情。这里有各种特色小吃、文化商店和民俗表演，吸引着无数游客前来观光游览，体验古城文化的魅力。

Jinli Ancient Street, situated in Chengdu, Sichuan Province, China, is famed for its historic charm, ancient architecture, and traditional culture. Visitors are transported back in time as they stroll through its well-preserved buildings, narrow alleys, and vibrant cultural scene, offering an immersive experience of ancient Chengdu's allure.



# 住宿预览

ACCOMMODATION

TOUR BY LOVELY VACATION (TOUR CODE: 7CJH3)



成都 CHENGDU



## 成都天府智选假日酒店或同级

### Holiday Inn Express Chengdu Tianfu or similar

成都天府智选假日酒店以其现代舒适的住宿环境和便利的地理位置而闻名。酒店周边交通便利，距离市内各大商业区和景点都很近，是商务和休闲旅行者的理想选择。

The hotel is known for its modern and comfortable accommodation and convenient location. With its prime location, the hotel is close to major business districts and attractions, making it an ideal choice for both business and leisure travelers.

九寨沟 JIUZHAIGOU



## 丽呈华廷度假酒店或同级

### Licheng Huating Resort or similar

九寨沟丽呈华廷度假酒店位于世界自然遗产、国家AAAAA级旅游景区九寨沟县彭丰村，距九寨沟景区游客中心步行即可到达，出行观景不用担心堵车烦恼。

Located in Jiuzhaigou, a world natural heritage site and National AAAAA-level tourist attraction. It is within walking distance from the Jiuzhaigou Scenic Area Visitor Center, eliminating concerns about traffic congestion during sightseeing trips.

茂县 MAOXIAN



## 凤凰阁大酒店或同级

### Fenghuangge Hotel or similar

茂县凤凰阁大酒店位于四川独有的少数民族(羌族)聚居区——茂县凤仪镇，临近109乡道；海拔1580米。同时坐拥松坪沟、九顶山等极富吸引力的旅游景点。

The hotel located in Fengyi Town, Mao County, Sichuan, near the 109 Township Road at 1580 meters above sea level, offers easy access to scenic spots like Songpin Gully and Jiuding Mountain.

峨眉山 EMEISHAN



## 峨眉山御泉湾温泉酒店同级

### Emeishan Royal Spring Hotel or similar

位于全国稀有的四项世界自然与文化双重遗产之一——峨眉山，与“天下名山”牌坊零距离、紧邻4A级峨秀湖公园，峨眉山门前，全球旅居地，拥揽优厚的地理和交通条件。

Located at Mount Emei, one of China's rare dual World Natural and Cultural Heritage sites, is strategically located near the iconic "Gateway to Heaven" archway and the 4A-rated Emei Xu Lake Park, making it the prime cultural and tourism hub of Mount Emei.



# 行程细节

TOUR ITINERARY

TOUR BY LOVELY VACATION (TOUR CODE: 7CJH3)



RECOMMENDED

推荐自费项目：RMB480/人  
眉山网红水街 + 九寨沟藏羌歌舞秀  
+ 藏式小吃（藏式围炉煮茶）

## 1 第一天 吉隆坡国际机场 - 成都（机上用餐）

- 机场集合办理登记手续，出发前往成都。
- 接机后，前往办理登记入住酒店。

## 2 第二天 成都 - 九寨沟（早/午/晚）

- 叠溪海子：四川阿坝的高山湖泊，以清澈湖水和壮丽雪山景观而著称。
- 松潘古城（外观）：位于四川阿坝的藏式古城，保存完好，展示着悠久的历史文化和独特的藏式建筑风格。

## 3 第三天 九寨沟（早/午/晚）

- 九寨沟景区(含电瓶车)：以其多姿多彩的湖泊、瀑布和山谷景观而著称，被誉为“人间仙境”。
- 双龙海瀑布（新景观）
- 树正沟（诺日朗瀑布、树正群海）
- 日则沟（镜海、珍珠滩瀑布、五花海）
- 则查洼沟（长海、五彩池）

## 4 第四天 九寨沟 - 黄龙 - 茂县（早/午/晚）

- 黄龙风景区(不含上下行缆车)：以其独特的彩池、清澈的瀑布和茂密的森林而著称，是自然奇观绝佳展示地。
- 林坡村仁博藏寨：房屋设计包括宽阔的院落和小窗，提供良好的保暖和防水效果。

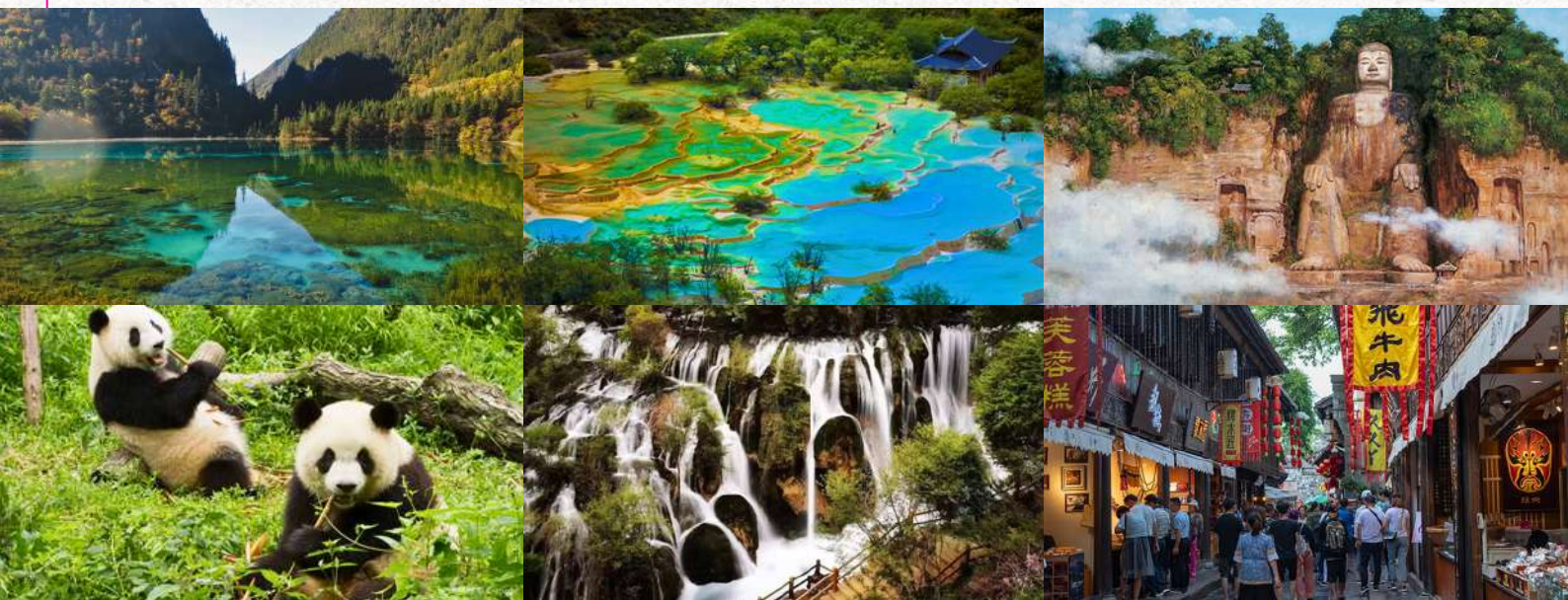
## 5 第五天 茂县 - 都江堰 - 峨眉山（早/午/晚）

- 都江堰熊猫乐园(含电瓶车)：基地内生活著许多憨态可掬的大熊猫，有大面积的草坪和竹林，空气清新。
- 乐山大佛(船游)：位于峨眉山脚下，是世界上最大的石刻佛像之一，雄伟壮观，历史悠久。

## 6 第六天 峨眉山 - 成都 - 吉隆坡（早/午/晚）

- 报国寺(含电瓶车)：建于唐代，是中国佛教名寺之一，寺内有古老的建筑和丰富的文物，氛围庄严肃穆。
- 伏虎寺(含电瓶车)：坐落在峨眉山上，寺内石刻精美，寺庙周围自然风光秀丽，是一处重要的佛教圣地。
- 峨眉山千承艺术馆：展示现代艺术品，融合传统与现代风格。
- 黄龙溪古镇：融汇历史文化与自然风光，展现古朴韵味与现代活力。
- 锦里古街：古色古香的历史街区，融合美食、文化和手工艺品。
- 春熙路：现代化商业街，集时尚购物、美食和娱乐于一体。
- 太古里：时尚商业综合体，高端购物和精致餐饮文化。
- 晚餐后前往机场：结束美好的一天，乘车回机场，结束行程。

## 7 第七天 吉隆坡 - 结束美好的旅程（机上用餐）



\*所列明行程、餐饮和住宿安排的顺序可能会由当地地接运营商根据实际的天气情况进行最终确定。





**Optional tour: RMB 400/pax**  
 Jiuzhai Ancient Love, Furong Guocui  
 Bian Lian Show, Qintai Gujing

### D1 KUALA LUMPUR - CHENGDU (MEAL ON BOARD)

- Depart from Kuala Lumpur International Airport to Chengdu
- Upon arrival, proceed to hotel check-in.

### D2 CHENGDU - JIUZHAIGOU (BREAKFAST/LUNCH/DINNER)

- Diexi Haizi Lake
- Songpan Ancient City (photo stop)

### D3 JIUZHAIGOU (BREAKFAST/LUNCH/DINNER)

- Jiuzhaigou Scenic Area (Buggy Included)
- Shuanglonghai Waterfall (New scenic spot)
- Shuzhenggou (Nuorilang Waterfall, Shuzheng Qunhai)
- Rize Ditch (Mirror Lake, Pearl Shoal Waterfall, Five Flower Lake)
- Zechawagou (Changhai Lake, Wucai Pool)

### D4 JIUZHAIGOU - HUANGLONG - MAOXIAN (BREAKFAST/LUNCH/DINNER)

- Huanglong Scenic & Historic Interest Area (Cable Car Excluded)
- Renbo Tibetan Village in Linpo Village

### D5 MAOXIAN - DUJIANGYAN - MOUNT EMEI (BREAKFAST/LUNCH/DINNER)

- Dujiangyan China Giant Panda Garden (Buggy Incl)
- Giant Buddha (Boat Ride Incl)

### D6 MOUNT EMEI - CHENGDU - KUALA LUMPUR (BREAKFAST/LUNCH/DINNER)

- Baoguo Temple (Buggy Incl)
- Fuhu Temple (Buggy Incl)
- Qiancheng Art Museum of Mount Emei
- Huanglongxi Ancient Town
- Jinli Ancient Street
- Chunxi Road
- Taikoo Li
- After dinner transfer to airport

### D7 KUALA LUMPUR - END OF A WONDERFUL JOURNEY (MEAL ON BOARD)





## ★ 特色亮点 HIGHLIGHT

- **尊享体验2+1 VIP游览巴士**  
VIP Premium 2+1 Executive Coach
- **峨眉自助烧烤 + 酒水任喝 / 川剧变脸鸳鸯火锅**  
Emeishan BBQ Buffet + Free-flow Drinks / Sichuan Opera Face Changing & Yin Yang Hotpot
- **升级五钻峨眉山御泉湾温泉酒店 (含温泉门票)**  
Emeishan Royal Spring Hotel (Including Hot Spring Tickets)
- **升级2晚全新五钻九寨沟丽呈华廷度假酒店**  
Upgrade 2-nights Brand-new 5-star : Jiuzhaigou Licheng Huating Resort
- **世界遗产名录和国家重点5A级 - 黄龙风景名胜区 & 九寨沟风景名胜区**  
UNESCO World Heritage Site and National 5A-Level Tourist Attraction - Huanglong Scenic Area & Jiuzhaigou Scenic Area
- **世界文化遗产之一 - 乐山大佛 (含船游)**  
Leshan Giant Buddha: UNESCO World Heritage Site (Including Boat Tour)
- **都江堰熊猫乐园(含电瓶车)**  
Dujiangyan China Giant Panda Garden(Buggy Incl)

天 DAY	早餐 BREAKFAST	午餐 LUNCH	晚餐 DINNER	酒店住宿 ACCOMMODATION
01	-	-	机上用餐 MEAL ON BOARD	成都天府智选假日酒店或同级 HOLIDAY INN EXPRESS CHENGDU TIANFU OR SIMILAR
02	酒店早餐 HOTEL BREAKFAST	中式合菜 CHINESE CUISINE	酒店晚餐 HOTEL DINNER	九寨沟丽呈华廷度假酒店或同级 JIUZHAIYOU LICHENG HUATING RESORT OR SIMILAR
03	酒店早餐 HOTEL BREAKFAST	景区自助餐 SCENIC AREA BUFFET	中式合菜 CHINESE CUISINE	九寨沟丽呈华廷度假酒店或同级 JIUZHAIYOU LICHENG HUATING RESORT OR SIMILAR
04	酒店早餐 HOTEL BREAKFAST	藏式汤锅 TIBETAN HOT POT	中式合菜 CHINESE CUISINE	茂县凤凰阁大酒店或同级 MAOXIAN FENGHUANGGE HOTEL OR SIMILAR
05	酒店早餐 HOTEL BREAKFAST	养生苑风味 HEALTH & WELLNESS CUISINE	峨眉烧烤风味 + 酒水任喝 EMEISHAN BBQ BUFFET + FREE-FLOW DRINKS	峨眉山御泉湾温泉酒店同级 EMEISHAN ROYAL SPRING HOTEL OR SIMILAR
06	酒店早餐 HOTEL BREAKFAST	中式合菜 CHINESE CUISINE	鸳鸯火锅 YUAN YANG STEAMBOAT	-
07	机上用餐 MEAL ON BOARD	-	-	-

### Travel Essentials:

- Passport or Visa - Participants are responsible for ensuring that their passports are valid for at least 6 months from the return date and obtaining necessary visas and permits.
- Travel Insurance - We recommend purchasing comprehensive travel insurance before departure.

### Terms and Conditions:

1. Tour fare quoted is for Malaysian, non-Malaysian surcharge applied.
2. The itinerary, meals, accommodations, and transportation are subject to adjustments without prior notice.
3. The sequence of itinerary, meals, and accommodations will be arranged according to local hosts and weather conditions.
4. In unforeseen circumstances, especially during peak travel seasons, we reserve the right to modify or cancel the itinerary.
5. We shall not be held responsible for any printing errors or omissions in our promotional materials or any other communication media, and reserve the right to rectify such inaccuracies.
6. Each member participating in our tours is responsible for their own safety and conduct.
7. In the event of unforeseen circumstances (such as transportation delays/cancellations, weather, illness, demonstrations, war, etc.) leading to additional expenses, we bear no responsibility, and travelers must bear the extra costs themselves.
8. The above images are for reference purposes only. Actual conditions may vary.

### 旅行必备:

- 参团者需确保护照有效期至少为返程日期的六个月，并取得必要的签证和准证。
- 出发前，我们建议您购买全面的旅游保险。

### 条款:

1. 团费仅适用于大马公民，外国公民则需缴付额外费用。
2. 旅程、膳食、住宿和交通的先后顺序将根据当地接待社和天气情况可能会有所调整，恕不另行通知。
3. 在无法预料的特殊情况下，尤其是在旅游旺季期间，我们将保留修改或取消行程的权利。
4. 若宣传手册或任何传播媒介出现任何印刷错误或遗漏，本社概不负责，并保留更正的权利。
5. 参与本社旅游团的每位成员必须对自己的安全和行为负责。
6. 若发生无法预料特殊情况（如：交通延误/取消、天气、疾病、示威、战争等），导致额外支出，我们概不负责，旅客需自行承担额外费用。
7. 上述图片仅供参考，请以实际情况为准。

For Agent Use Only :  
仅供代理商使用:

Updated Date 更新日期: MAY 2024