

**5D4N**

# Chiang Mai / Pai Thailand



# 行程亮点

## Highlights



**Hi-Tea with Thai Costume**  
下午茶和體驗傳統泰式服裝



**Private Tour**  
专属私人团



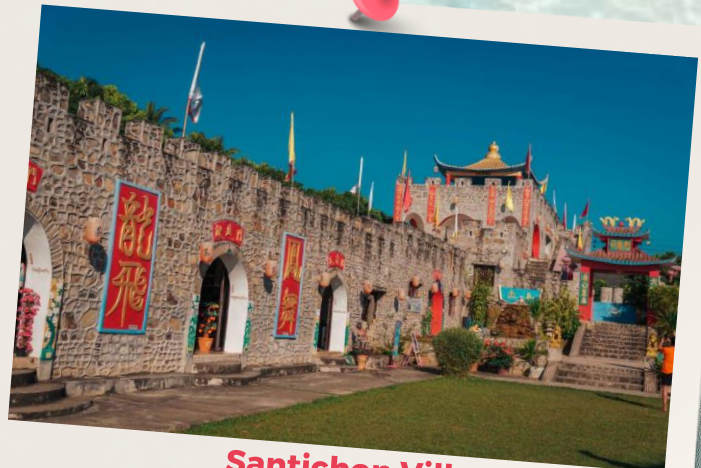
**Yunlai View point for sunrise with Brunch**  
清晨云南山地村观景台观看日出(含早茶)



**Long Neck Village**  
長頸族村



**Elephant Ridding**  
體驗騎大象



**Santichon Village**  
圣子村

# 5D4N Chiang Mai / Pai Travel Itinerary

## DAY 1

—Arrival Chiang Mai

(D)

Meet at the Arrival at Chiang Mai International Airport. welcome to Chiang Mai meet & greet with local guide, then visit:

- City Orientation of Chiang Mai city Walls 【清邁古城牆】
- Three Kings Monument 【三王紀念碑】
- Chedi Luang Temple 【契迪龍寺】

## DAY 2

—Chiang Mai - Pai

(B / L / D)

- Doi Suthep included automatic tram 【雙龍寺含纜車】
- Transfer to Pai 【驅車前往拜縣】
- Pai World War II Memorial Bridge 【參觀第二世界大戰後遺留的紀念橋】
- Love of Pai Café 【愛拜咖啡廳】
- Pai Canyon 【拜縣峽谷賞日落】
- Pai Walking Street and enjoy local food @ Pai Night market 【拜縣步行街】

## DAY 3

—Pai - Chiang Mai

(B / Brunch / L / D)

- Yunlai View point for sunrise and cloud sea with Brunch 【清晨雲南山地村觀景台觀看日出(含早茶)】
- Santichon Village the only one Yunnan's Village in Pai 【拜訪聖子村\*\*拜縣唯一一個雲南山地村】
- Strawberry Farm 【草莓園】
- Transfer back to Chiang Mai

## DAY 4

—Chiang Mai

(B / L / Hi-Tea / D)

- Elephants at Work enjoy elephant shows and experience Elephant Ridding 【前往大象營觀賞大象營表演和體驗騎大象】
- Long Neck Village 【長頸族村】
- Enjoy Hi-Tea with Thai Costume 【享用下午茶和體驗傳統泰式服裝】
- Bor Sang Handicraft 【手工藝術村】
- After dinner, visit Night Market 【夜市】

## DAY 5

—Chiang Mai Departure

(B)

- Breakfast at hotel and check out.
- Transfer to Chiang Mai international airport for departure with sweet memories.



**GRD-5TCP 5D4N Full Board Package****Validity Date: 01 Apr 2023 - 31 Oct 2023****Package Rate (MYR) Per pax**

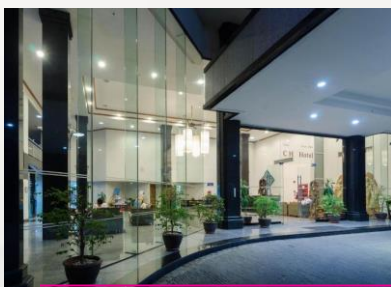
Description	2-5	6-9	10-14	15-up	SGL
<b>3N Chiang Mai The CH Hotel (3*) 1N Pai Yoma Hotel</b>	2,648	1,598	1,548	1,368	470
<b>3N Chiang Mai Duang Tawan Hotel (4*) 1N Pai Yoma Hotel</b>	2,698	1,648	1,598	1,408	525
<b>3N Chiang Mai Dusit D2 (5*) 1N Pai Yoma Hotel</b>	2,868	1,808	1,758	1,578	690

**Package Details**

- Min 2 pax adult (GV2) per booking.
- Tour packages are only applied for Malaysian passport holder.
- Prices are quoted per person in RM & subject to change without prior notice
- Meal stated as per itinerary.
- Compulsory tipping for tour guide RM14 per pax per day.
- English speaking guide during the tour, mandarin speaking guide is subject to availability
- **Full Payment** upon booking confirmation.
- Child (02-12 yrs. old) Twin share 100% adult rate, Extra bed 75% of adult rate and sharing bed with parents 50% of adult rate
- Infant 24 months or below - FOC
- Back out period festival surcharge Songkran, LoyKhong , Peak season ,Christmas , New year , Chinese new year
- Room accommodation head count only count on guest, non-guest will not count into room accommodation Hotel rooms are subject to availability. If selected hotel unavailable, others similar accommodation will be provided with different price apply (if any).
- Peak Season Date & Surcharge Subject to change without prior notice
- The Management reserves the right to alter, amend, delete or add to these conditions or withdraw the package at any time without prior notice.

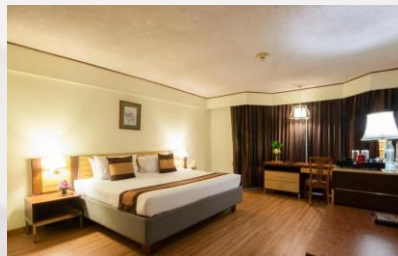


# CHIANG MAI HOTEL

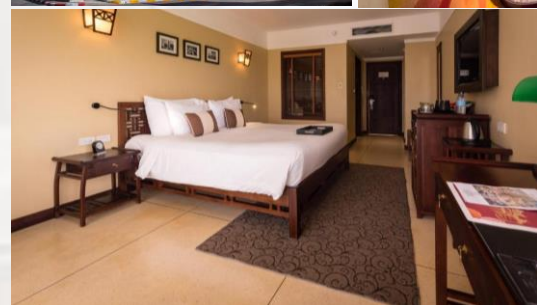


**Superior 3\*  
The CH Hotel**

**Superior 4\*  
Duangtawan  
Hotel**



**Deluxe 5\*  
Dusit D2  
Chiang Mai**



# PAI HOTEL

**Yoma Pai  
Hotel**

