

**去深度游**  
*Lovely Malaysia*

4 DAYS 3 NIGHTS

# SEMPORNA + MABUL

SABAH



- \* Special arrange Romantic glass boat ride
- \* Special arrange Professional underwater photography services

**Promotion Period: Now Until 31 Dec 2022**

**Travelling Period: Now Until 31 Dec 2022**

GROUND ARRANGEMENT ~ (T/C GRD-4MSM-) | UPDATED: 10JAN2022



## 行程简介 TRAVEL ITINERARY

### DAY 1 TAWAU AIRPORT - SEMPORNA

Arrival Tawau Airport

抵达斗湖国际机场

Depart to Hotel

送往酒店

Room Check-in

办理入住手续

Free and Easy

自由活动

### DAY 2 SEMPORNA

Enjoy simple breakfast

享用简单早餐

Meet at Lobby for advance safety briefing

大厅集合，教练讲解出海知识

Depart to Jetty

送往码

Island Hopping

出海跳岛

( Option 1 OR Option 2)

( 选项一或选项二)

Enjoy Lunch box

享用便当午餐

Back to Jetty

回到码头

Depart to Hotel

送往酒店

Free and Easy

自由活动

### DAY 3 SEMPORNA - SIPADAN MABUL RESORT

Semporna Jetty to Mabul Resort

仙本那码头搭船马布潜水胜地

Check in

办理入住手续

Lunch

享用午餐

Gather for safety briefing

集合，教练讲解浮浅知识

Snorkelling

无限次浮浅

Dinner

享用晚餐

### DAY 4 MABUL - TAWAU AIRPORT

Enjoy simple breakfast

享用简单早餐

Depart to Tawau Airport

送往机场

Home Sweet Home

返回美丽的家园

## 选择一：敦沙卡兰海洋公园 Option 1: Tun Sakaran Marine Park



### 珍珠岛 Bohey Dulang Island

一座死火山島，火山口形成一個環礁瀉湖，如今已被海水淹沒，而沿著火山口南緣則有綿延的珊瑚礁群。最引人注目的是高達海拔約300公尺的山峰，爬上山頂可以俯瞰整個仙本那及所有敦沙卡蘭海洋公園島嶼的全景。

The islands are part of an extinct volcanic crater what are now forming a beautiful lagoon. The lagoon is open on its southern side but the crater rim on that side extends into a long coral reef. A thin channel separates Bohey Dulang from Pulau Bodgaya, which is the largest island in the group.



### 军舰岛 Mantabuan Island

岛屿距仙本那镇约45分钟船程，为无人小海岛，景色非常美，高大的椰子树直插入天空，洁白的沙滩缓流入湛蓝的海水，清澈见底的海水下浮游着各种鱼类，海底生长着大片形态各异、颜色万千的珊瑚，美到让人沉醉。为了保护当地的环境，政府不允许在这个岛上住人，游客都需当天返回，而且每个上岛的人都要登记姓名。

Is a volcanic made island and the smallest in the collection of islands that form Tun Sakaran Marine Park. Mantabuan nestles at a distance of 2km from Bodgaya, the largest island of the Park. The area of Mantabuan is 10 hectares. The only occupants are the nomadic community of Sea Gypsies who inhabit Mantabuan and surrounding islands. Known as the Bajau Laut, they live in their boats or huts built on stilts on coral reefs.



### 曼达布安岛 Sibuan Island

一个被许多珊瑚礁，绿松石蓝色的大海和白色的沙滩环绕着。居住此海的海洋生物种类繁多，有着丰富的多元化生态。不管是Nemo，还是Dory，我相信在那里，你一定能找到一整个家族的它们。

Seen as one of the best muck diving (macro divers paradise) spots in Malaysia. Here you can enjoy encounters with many amazing underwater creatures; like pygmy seahorses, nudibranches, mandarin fish, crocodile fish, lion fish, scorpion fish and frog fish.

## 选择二：马来西亚的马尔代夫之旅 Option 2: Enjoy Snorkeling in Malaysia's Maldives



### 马达京岛海域+登岛 **Mataking Island+Board Island**

两座岛组成，隔着半公里，马达京岛的面积只有3 x 1.5平方公里，绕岛周边走一圈只需要一个小时。两座岛之间有一条隐藏在海里的沙桥。退潮时，连接大小马达京岛的“沙桥”便会浮现，把两座岛连接起来，可以步行跨岛。你可以在马达京岛上“水上漫步”哦！

Is actually made up of two islands: the Kecil (the small island) and the Besar (the big island). These islands are connected through a sandbar. This sandbar offers visitors the unique experience of feeling like they're walking on water.



### 汀巴汀巴岛海域+登岛 **Timba-Timba Island+Board Island**

海水经常在阳光中折射成几种颜色。中间的一条细长的沙滩会在退潮时露出来，左右两边的海水也是不同的颜色，一边深蓝，一边浅绿，温柔的一浪接一浪，冲刷着细细白白的沙子，如悦耳的枕边歌声，感觉浪漫之极。

Is known for the wonderful beach great to look for rare marine life that includes large cuttlefish, frog fish, crab, sea snakes and sometimes nurse sharks hiding under table coral. While turtles can be seen in numbers other frequent sights include blue ribbon eels, moray eels, barracudas, lobster, large coral trout and snappers.



### 邦邦岛 **Pom Pom Island**

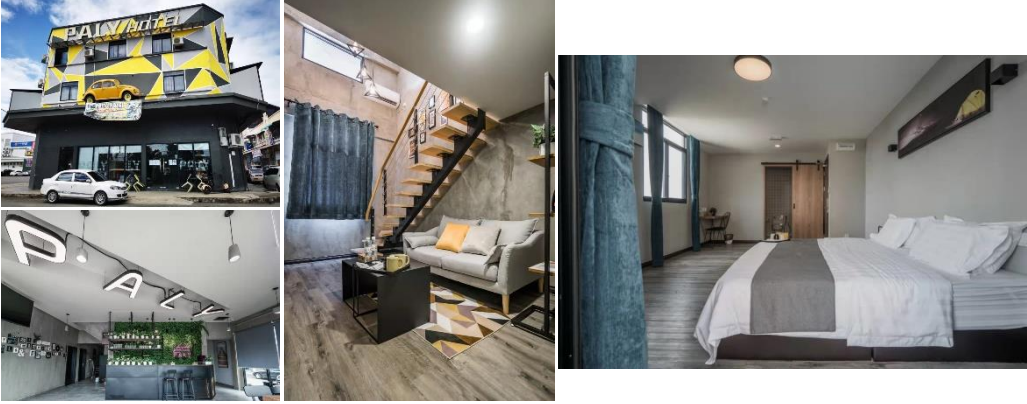
小珊瑚岛，岛上有白色的沙滩、珊瑚海滩，同时也是绿蠵龟与玳瑁的一个重大栖息筑巢的位置。

Small coral reef island in the Celebes Sea, has a white sand coral beach and is a significant nesting location site for green and hawksbill turtles.

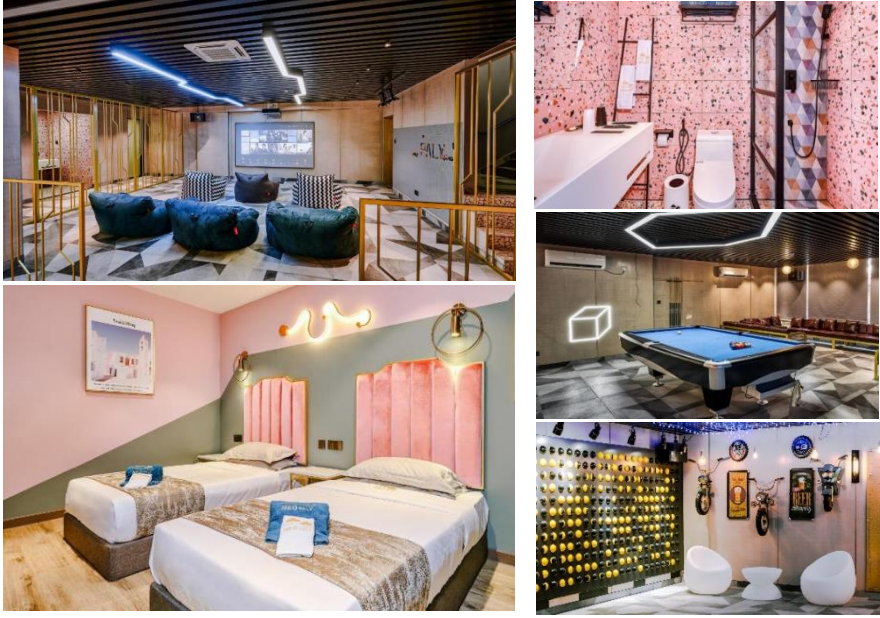


# Semporna Wings Hotel

# Semporna Paly Hotel



# Semporna Neo Paly Hotel



# Sipadan Mabul Resort

**4D3N SEMPORNA + MABUL****4MSM-Snorkeling Package PER PAX (MYR)**

<b>HOTEL TYPE</b>	<b>PRICE RATE</b>	<b>SINGLE Supp</b>
<b>2N Semporna Wing's Hotel / Semporna Paly Hotel 1N Sipadan Mabul Resort (Standard Chalet)</b>	RM 1998	RM 1500
<b>2N Neo Paly Hotel Deluxe Room (With Balcony) 1N Sipadan Mabul Resort (Standard Chalet)</b>	RM 2198	RM 1600

Mabul Snorkeling full set equipment rental fees - RM30 per person per day

Jetty Fees Rm11 per person (payable to the Municipal Council of Semporna)

**Package Details**

- Min 2 pax adult (GV2) per booking.
- Room equipped with private bathroom.
- Meal stated as per itinerary.
- Non-refundable deposit of RM 800/pax upon booking confirmation.
- Child with bed same price as adult rate, child without bed - based on adult rate deduct 50% per pax.
- Infant 24months or below - RM 150/pax.
- Complimentary Daily Breakfast
- Room accommodation head count only count on guest, non-guest will not count into room accommodation headcount.
- For the discovery diving trip in Semporna, it will be additional RM 180/pax/option (Included diving equipment)  
Option 1: Tun Sakaran Marine Park  
- Bohey Dulang Island : Just for Hiking - Mantabuan Island : 1st DSD - Sibuan Island : 2nd DSD  
Option 2: Enjoy Discovery Scuba Diving in Malaysia's Maldives  
- Mataking Island : 1st DSD - Pandanan Island : Having Lunch & take rest/taking photo - Timba-Timba Island : 2nd DSD
- Extension night charges (without activities):  
a. Semporna Wing's/Paly Hotel - RM 100/room/night  
b. Semporna Neo Paly (Deluxe room with balcony) - RM 200/room/night  
c. Sipadan Mabul Resort - RM 1550/room/night : 1 breakfast, 1 lunch, 1 dinner and unlimited snorkeling activity.
- Hotel rooms are subject to availability. If selected hotel unavailable, others similar accommodation will be provided with different price apply (if any).
- Peak Season Date & Surcharge Subject to change without prior notice
- The Management reserves the right to alter, amend, delete or add to these conditions or withdraw the package at any time without prior notice.

**Sipadan Mabul Resort Detail:**

- Transfer by boat from Semporna (MABUL private Jetty) to MABUL resort and return (on SIC basis).
- Sipadan Mabul Resort is provided free flow tea & coffee.
- Speed boat departure on 12:30PM daily from Semporna jetty.
- Speed boat departure on 07:00AM & 11:00PM & 14:00PM daily from Sipadan Mabul Resort.
- All boat schedules and sea sport activities are subject to weather and sea conditions.
- All rates are subject to change without prior notice.
- The resort is not liable for any guest's equipment damages; all guests are to be responsible for their own equipment.
- The resort is not liable for any loss, accident, delay or other irregularity resulting from activities.
- Prices are quoted per person in Ringgit Malaysia (MYR) & subject to change without prior notice.
- These package is excluded Travel Insurance.
- Tour packages are only applied for Malaysian.

