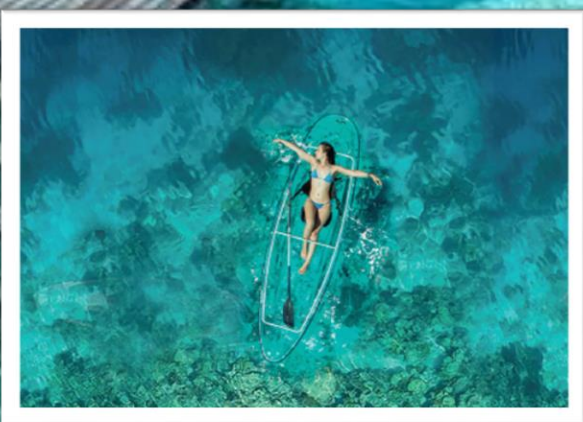




5 DAYS 4 NIGHTS

SEMPORNA + KAPALAI

SABAH



- * Special arrange Romantic glass bottom boat ride
- * Special arrange Professional underwater photography services

Promotion Period: Now Until 30 Jun 2022
Travelling Period: 01 Jan Until 30 Jun 2022

GROUND ARRANGEMENT ~ (T/C GRD-5MSL-) | UPDATED: 10JAN2022

DAY 1 TAWAU AIRPORT - SEMPORNA

Arrival Tawau Airport

抵达斗湖国际机场

Depart to Hotel

送往酒店

Room Check-in

办理入住手续

Free and Easy

自由活动

DAY 2 SEMPORNA

Enjoy simple breakfast

享用简单早餐

Meet at Lobby for advance safety briefing

大厅集合，教练讲解出海知识

Depart to Jetty

送往码头

Island Hopping

出海跳岛

(Option 1 OR Option 2)

(选项一或选项二)

Enjoy Lunch box

享用便当午餐

Back to Jetty

回到码头

Depart to Hotel

送往酒店

Free and Easy

自由活动

DAY 3 SEMPORNA - KAPALAI DIVE RESORT

Semporna Jetty to Kapalai Resort

仙本那码头码头搭船卡帕莱潜水胜地

Check in

办理入住手续

Lunch

享用午餐

Gather for safety briefing

集合，教练讲解浮浅知识

Snorkelling

无限次浮浅

Dinner

享用晚餐

DAY 4 KAPALAI DIVE RESORT

Enjoy simple breakfast

享用简单早餐

Snorkelling

无限次浮浅

Lunch

享用午餐

Snorkelling

无限次浮浅

Dinner

享用晚餐

DAY 5 KAPALAI - TAWAU AIRPORT

Enjoy simple breakfast

享用简单早餐

Depart to Tawau Airport

送往机场

Home Sweet Home

返回美丽的家园

选择一：敦沙卡兰海洋公园 Option 1: Tun Sakaran Marine Park



珍珠岛 Bohey Dulang Island

一座死火山島，火山口形成一個環礁瀉湖，如今已被海水淹沒，而沿著火山口南緣則有綿延的珊瑚礁群。最引人注目的是高達海拔約300公尺的山峰，爬上山頂可以俯瞰整個仙本那及所有敦沙卡蘭海洋公園島嶼的全景。

The islands are part of an extinct volcanic crater what are now forming a beautiful lagoon. The lagoon is open on its southern side but the crater rim on that side extends into a long coral reef. A thin channel separates Bohey Dulang from Pulau Bodgaya, which is the largest island in the group.



军舰岛 Mantabuan Island

岛屿距仙本那镇约45分钟船程，为无人小海岛，景色非常美，高大的椰子树直插入天空，洁白的沙滩缓流入湛蓝的海水，清澈见底的海水下浮游着各种鱼类，海底生长着大片形态各异、颜色万千的珊瑚，美到让人沉醉。为了保护当地的环境，政府不允许在这个岛上住人，游客都需当天返回，而且每个上岛的人都要登记姓名。

Is a volcanic made island and the smallest in the collection of islands that form Tun Sakaran Marine Park. Mantabuan nestles at a distance of 2km from Bodgaya, the largest island of the Park. The area of Mantabuan is 10 hectares. The only occupants are the nomadic community of Sea Gypsies who inhabit Mantabuan and surrounding islands. Known as the Bajau Laut, they live in their boats or huts built on stilts on coral reefs.



曼达布安岛 Sibuan Island

一个被许多珊瑚礁，绿松石蓝色的大海和白色的沙滩环绕着。居住此海的海洋生物种类繁多，有着丰富的多元化生态。不管是Nemo，还是Dory，我相信在那里，你一定能找到一整个家族的它们。

Seen as one of the best muck diving (macro divers paradise) spots in Malaysia. Here you can enjoy encounters with many amazing underwater creatures; like pygmy seahorses, nudibranches, mandarin fish, crocodile fish, lion fish, scorpion fish and frog fish.

选择二：马来西亚的马尔代夫之旅 Option 2: Enjoy Snorkeling in Malaysia's Maldives



马达京岛海域+登岛 **Mataking Island+Board Island**

两座岛组成，隔着半公里，马达京岛的面积只有3 x 1.5平方公里，绕岛周边走一圈只需要一个小时。两座岛之间有一条隐藏在海里的沙桥。退潮时，连接大小马达京岛的“沙桥”便会浮现，把两座岛连接起来，可以步行跨岛。你可以在马达京岛上“水上漫步”哦！

Is actually made up of two islands: the Kecil (the small island) and the Besar (the big island). These islands are connected through a sandbar. This sandbar offers visitors the unique experience of feeling like they're walking on water.



汀巴汀巴岛海域+登岛 **Timba-Timba Island+Board Island**

海水经常在阳光中折射成几种颜色。中间的一条细长的沙滩会在退潮时露出来，左右两边的海水也是不同的颜色，一边深蓝，一边浅绿，温柔的一浪接一浪，冲刷着细细白白的沙子，如悦耳的枕边歌声，感觉浪漫之极。

Is known for the wonderful beach great to look for rare marine life that includes large cuttlefish, frog fish, crab, sea snakes and sometimes nurse sharks hiding under table coral. While turtles can be seen in numbers other frequent sights include blue ribbon eels, moray eels, barracudas, lobster, large coral trout and snappers.



邦邦岛 **Pom Pom Island**

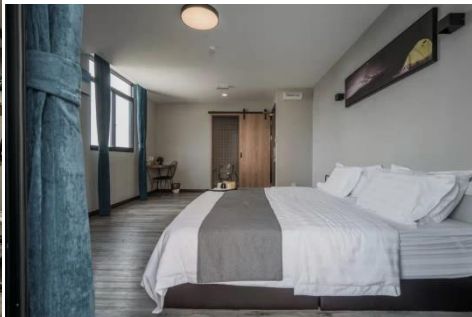
小珊瑚岛，岛上有白色的沙滩、珊瑚海滩，同时也是绿蠵龟与玳瑁的一个重大栖息筑巢的位置。

Small coral reef island in the Celebes Sea, has a white sand coral beach and is a significant nesting location site for green and hawksbill turtles.

Semporna Wings Hotel



Semporna Paly Hotel



Semporna Neo Paly Hotel



Kapalai Dive Resort



5D4N SEMPORNA + KAPALAI**5MSL-Snorkeling Package PER PAX (MYR)****Price included 6% SST**

HOTEL TYPE	PRICE RATE	SINGLE Supp
2N Semporna Wing's Hotel 2N Kapalai Dive Resort	RM 2028 RM 2198	RM 1450
2N Neo Paly Hotel Deluxe Room (With Balcony) 2N Kapalai Dive Resort	RM 2198 RM 2398	RM 1500
Kapalai Snorkeling equipment rental fees - RM15 per mask per day / RM6 per snorkel per day		
Jetty Fees RM11 per person (payable to the Municipal Council of Semporna)		

Package Details

- Min 2 pax adult (GV2) per booking.
- Room equipped with private bathroom.
- Meal stated as per itinerary.
- Non-refundable deposit of RM 1000/pax upon booking confirmation.
- Child with bed same price as adult rate, child without bed - based on adult rate deduct 50% per pax.
- Infant 24months or below - RM 150/pax.
- Complimentary Daily Breakfast
- Room accommodation head count only count on guest, non-guest will not count into room accommodation headcount.
- For the discovery diving trip in Semporna, it will be additional RM 180/pax/option (Included diving equipment)
 - Option 1: Tun Sakaran Marine Park
 - Bohey Dulang Island : Just for Hiking - Mantabuan Island : 1st DSD - Sibuan Island : 2nd DSD
 - Option 2: Enjoy Discovery Scuba Diving in Malaysia's Maldives
 - Mataking Island : 1st DSD - Pandanan Island : Having Lunch & take rest/taking photo - Timba-Timba Island : 2nd DSD
- (Each DSD activities is about 20-25min, One guide will guide max 2 pax customer per activity)
(EX. if have 4 customer will need to take turn and wait on boat)
- Extension night charges (without activities):
 - a. Semporna Wing's/Paly Hotel - RM 100/room/night
 - b. Semporna Neo Paly (Deluxe room with balcony) - RM 200/room/night
 - c. Sipadan Kapalai Dive Resort - RM 1660/room/night : 1 breakfast, 1 lunch, 1 dinner and unlimited snorkeling activity.
- Hotel rooms are subject to availability. If selected hotel unavailable, others similar accommodation will be provided with different price apply (if any).
- Peak Season Date & Surcharge Subject to change without prior notice
- The Management reserves the right to alter, amend, delete or add to these conditions or withdraw the package at any time without prior notice.

Sipadan Kapalai Dive Resort Detail:

- Transfer by boat from Semporna (KAPALAI private Jetty) to KAPALAI resort and return (on SIC basis).
- Kapalai Dive Resort is provided free flow tea & coffee.
- Speed boat departure on 10:30AM & 12:30PM daily from Semporna jetty.
- Speed boat departure on 09:30AM & 13:30PM daily from Kapalai Dive Resort.
- All boat schedules and sea sport activities are subject to weather and sea conditions.
- All rates are subject to change without prior notice.
- The resort is not liable for any guest's equipment damages; all guests are to be responsible for their own equipment.
- No any hotel room had been hold / block. KAPALAI has **no other room category** and **allocation** of room is **based on RUN OF HOUSE (ROH) basis. (choosing of room by number will not be entertained)**
- The resort is not liable for any loss, accident, delay or other irregularity resulting from activities.
- Prices are quoted per person in Ringgit Malaysia (MYR) & subject to change without prior notice.
- These package is excluded Travel Insurance.
- Tour packages are only applied for Malaysian.