

大深度游
Lovely Malaysia

3 DAYS 2 NIGHTS

SEMPORNA

SABAH



Promotion Period: Now Until 31 Dec 2022
Travelling Period: Now Until 31 Dec 2022

GROUND ARRANGEMENT ~ (T/C GRD-3MSS-) | UPDATED: 27OCT2021



行程简介 TRAVEL ITINERARY

DAY 1 TAWAU AIRPORT - SEMPORNA

From West Malaysia Airport to Tawau Airport	从西马机场起飞前往斗湖国际机场
Depart to Hotel	送往酒店
Room Check-in	办理入住手续
Free and Easy	自由活动

DAY 2 SEMPORNA

Enjoy simple breakfast	享用简单早餐
Meet at Lobby for advance safety briefing	大厅集合，教练讲解出海知识
Depart to Jetty	送往码
Island Hopping (Option 1 OR Option 2 OR Option 3)	出海跳岛 (选项一或选项二或选项三)
Enjoy Lunch box	享用便当午餐
Back to Jetty	回到码头
Depart to Hotel	送往酒店
Free and Easy	自由活动

DAY 3 SEMPORNA - TAWAU AIRPORT

Enjoy simple breakfast	享用简单早餐
Depart to Tawau Airport	送往机场
Home Sweet Home	返回美丽的家园

选择一：敦沙卡兰海洋公园 Option 1: Tun Sakaran Marine Park



珍珠岛 Bohey Dulang Island

一座死火山島，火山口形成一個環礁瀉湖，如今已被海水淹沒，而沿著火山口南緣則有綿延的珊瑚礁群。最引人注目的是高達海拔約300公尺的山峰，爬上山頂可以俯瞰整個仙本那及所有敦沙卡蘭海洋公園島嶼的全景。

The islands are part of an extinct volcanic crater what are now forming a beautiful lagoon. The lagoon is open on its southern side but the crater rim on that side extends into a long coral reef. A thin channel separates Bohey Dulang from Pulau Bodgaya, which is the largest island in the group.



军舰岛 Mantabuan Island

岛屿距仙本那镇约45分钟船程，为无人小海岛，景色非常美，高大的椰子树直插入天空，洁白的沙滩缓流入湛蓝的海水，清澈见底的海水下浮游着各种鱼类，海底生长着大片形态各异、颜色万千的珊瑚，美到让人沉醉。为了保护当地的环境，政府不允许在这个岛上住人，游客都需当天返回，而且每个上岛的人都要登记姓名。

Is a volcanic made island and the smallest in the collection of islands that form Tun Sakaran Marine Park. Mantabuan nestles at a distance of 2km from Bodgaya, the largest island of the Park. The area of Mantabuan is 10 hectares. The only occupants are the nomadic community of Sea Gypsies who inhabit Mantabuan and surrounding islands. Known as the Bajau Laut, they live in their boats or huts built on stilts on coral reefs.



曼达布安岛 Sibuan Island

一个被许多珊瑚礁，绿松石蓝色的大海和白色的沙滩环绕着。居住此海的海洋生物种类繁多，有着丰富的多元化生态。不管是Nemo，还是Dory，我相信在那里，你一定能找到一整个家族的它们。

Seen as one of the best muck diving (macro divers paradise) spots in Malaysia. Here you can enjoy encounters with many amazing underwater creatures; like pygmy seahorses, nudibranches, mandarin fish, crocodile fish, lion fish, scorpion fish and frog fish.

选择二：马布及卡帕莱双岛浮潜

Option 2: Mabul Island & Kapalai Island Snorkeling Trip



马布岛海域 **Mabul Island**

世界顶级潜水胜地之一，游客可在此游泳、浮潜和潜水。马布岛附近海域生活着种类丰富的海洋生物，不谙水性的游客也可在水上屋走廊上观赏海底五彩缤纷的珊瑚、海星和鱼类等。

- 不包含上岛费用 - RM30/位

Is also renowned for its amazing array of macro life, making it an underwater photographer's dream location to capture some of the rarest ecological species on film. Flamboyant cuttlefish, blue-ringed octopus, spike-fin gobies, frogfish and moray eels are just some of the spectacular critters you will encounter beneath the waters of Mabul.



卡帕莱岛海域 **Kapalai Island**

是世界闻名的潜水天堂之一。这里基本上没有陆地，是远离陆地与尘世的蓝色天堂，只有在落潮时才会露出沙滩。到处可见浩瀚壮观的西里伯斯海(Celebes Sea)海景。

Is one of the many beautiful diving havens in this part of the world. However, Kapalai is truly unique because it is not quite an 'island', it is a sandbank in the middle of the Celebes Sea.

选择三：马来西亚的马尔代夫之旅

Option 3: Enjoy Snorkeling in Malaysia's Maldives



马达京岛海域+登岛 **Mataking Island+Board Island**

两座岛组成，隔着半公里，马达京岛的面积只有3 x 1.5平方公里，绕岛周边走一圈只需要一个小时。两座岛之间有一条隐藏在海里的沙桥。退潮时，连接大小马达京岛的“沙桥”便会浮现，把两座岛连接起来，可以步行跨岛。你可以在马达京岛上“水上漫步”哦！

Is actually made up of two islands: the Kecil (the small island) and the Besar (the big island). These islands are connected through a sandbar. This sandbar offers visitors the unique experience of feeling like they're walking on water.



汀巴汀巴岛海域+登岛 **Timba-Timba Island+Board Island**

海水经常在阳光中折射成几种颜色。中间的一条细长的沙滩会在退潮时露出来，左右两边的海水也是不同的颜色，一边深蓝，一边浅绿，温柔的一浪接一浪，冲刷着细细白白的沙子，如悦耳的枕边歌声，感觉浪漫之极。

Is known for the wonderful beach great to look for rare marine life that includes large cuttlefish, frog fish, crab, sea snakes and sometimes nurse sharks hiding under table coral. While turtles can be seen in numbers other frequent sights include blue ribbon eels, moray eels, barracudas, lobster, large coral trout and snappers.



邦邦岛 **Pom Pom Island**

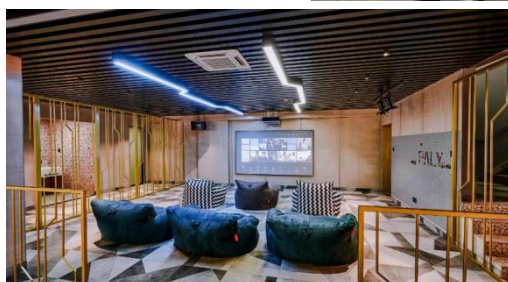
小珊瑚岛，岛上有白色的沙滩、珊瑚海滩，同时也是绿蠓龟与玳瑁的一个重大栖息筑巢的位置。

Small coral reef island in the Celebes Sea, has a white sand coral beach and is a significant nesting location site for green and hawksbill turtles.

Semporna Wings Hotel



Semporna Neo Paly Hotel



ADULT or CHILD

Twin / Triple Room Sharing (MYR) PER PAX

SNORKELING PACKAGE GV2

HOTEL TYPE	PRICE RATE	SINGLE SUPP
Semporna Wing's Hotel	RM388 RM458	RM 100
Neo Paly Hotel Deluxe Room (No Window)	RM 528	RM 230
Neo Paly Hotel Deluxe Room (With Window)	RM 628	RM 330

ADULT or CHILD

Twin / Triple Room Sharing (MYR) PER PAX

DISCOVER SCUBA DIVING PACKAGE GV2

HOTEL TYPE	PRICE RATE	SINGLE SUPP
Semporna Wing's Hotel	RM 638	RM 100
Neo Paly Hotel Deluxe Room (No Window)	RM 708	RM 230
Neo Paly Hotel Deluxe Room (With Window)	RM 808	RM 330

For the discovery diving trip in Semporna, included diving equipment

Option 1: Tun Sakaran Marine Park

- Bohey Dulang Island : Just for Hiking - Mantabuan Island : 1st DSD - Sibuan Island : 2nd DSD

Option 2: Enjoy Discovery Scuba Diving in Malaysia's Maldives

- Matakang Island : 1st DSD - Pandanan Island : Having Lunch & take rest/taking photo - Timba-Timba Island : 2nd DSD

Option 3: Mabul Island & Kapalai Island Diving Trip

- Mabul Island : 1st DSD - Kapalai Island : 2nd DSD

(Each DSD activities is about 20-25min, One guide will guide max 2 pax customer per activity.)

(EX. if have 4 customer will need to take turn and wait on boat)

ADULT or CHILD**Twin / Triple Room Sharing (MYR) PER PAX****(Package minimum qualification requirement : PADI OPEN WATER certified or equivalent)****FUN DIVE PACKAGE GV2**

HOTEL TYPE	PRICE RATE	SINGLE SUPP
Semporna Wing's Hotel	RM 658	RM 100
Neo Paly Hotel Deluxe Room (No Window)	RM 728	RM 230
Neo Paly Hotel Deluxe Room (With Window)	RM 828	RM 330

For the fun dive trip in Semporna, included diving equipment

Option 1: Tun Sakaran Marine Park

- Bohey Dulang Island : 1st FD - Mantabuan Island : 2nd FD - Sibuan Island : 3th FD

Option 2: Enjoy Discovery Scuba Diving in Malaysia's Maldives

- Matakang Island : 1st FD - Pandanan Island : Having Lunch & take rest/taking photo - Timba-Timba Island : 2nd FD and 3th FD

Option 3: Mabul Island & Kapalai Island Diving Trip

- Kapalai Island : 1st FD and 2nd FD - Mabul Island : 3th FD

(Each FD activities is about 30-45min, One guide will guide max 2 pax customer per activity.)

(EX. if have 4 customer will need to take turn and wait on boat)

Remarks:

- Min. 2 adults per booking (GV2).
 - Child with bed same price as adult rate, child without bed deduct RM100.
 - Extension night charges:
 - a. Semporna Wing's Hotel - RM150/room/night
 - b. Semporna Neo Paly (Deluxe room no window) - RM200/room/night
 - c. Semporna Neo Paly (Deluxe room with balcony) - RM300/room/night
 - Wings Hotel and Neo Paly simple breakfast include bread, biscuit, jam, tea & coffee.
 - Included entrance fees/jetty fees/island fees stated as per itinerary and snorkeling equipment.
 - Tour packages are only applied for Malaysian.
 - Prices are quoted per person in Ringgit Malaysia (MYR) & subject to change without prior notice.
 - Excluded international/domestic air ticket.
 - Meal stated as per itinerary.
 - Non-refundable deposit of RM150/pax upon booking confirmation.
 - Agent collection fees RM30/pax.
 - Hotel rooms are subject to availability. If selected hotel unavailable, others similar accommodation will be provided with different price apply (if any).
 - Peak Season Date & Surcharge Subject to change without prior notice
- Any special event's surcharge / block out date TBA upon booking confirmation.

