



3D2N TAMAN NEGARA



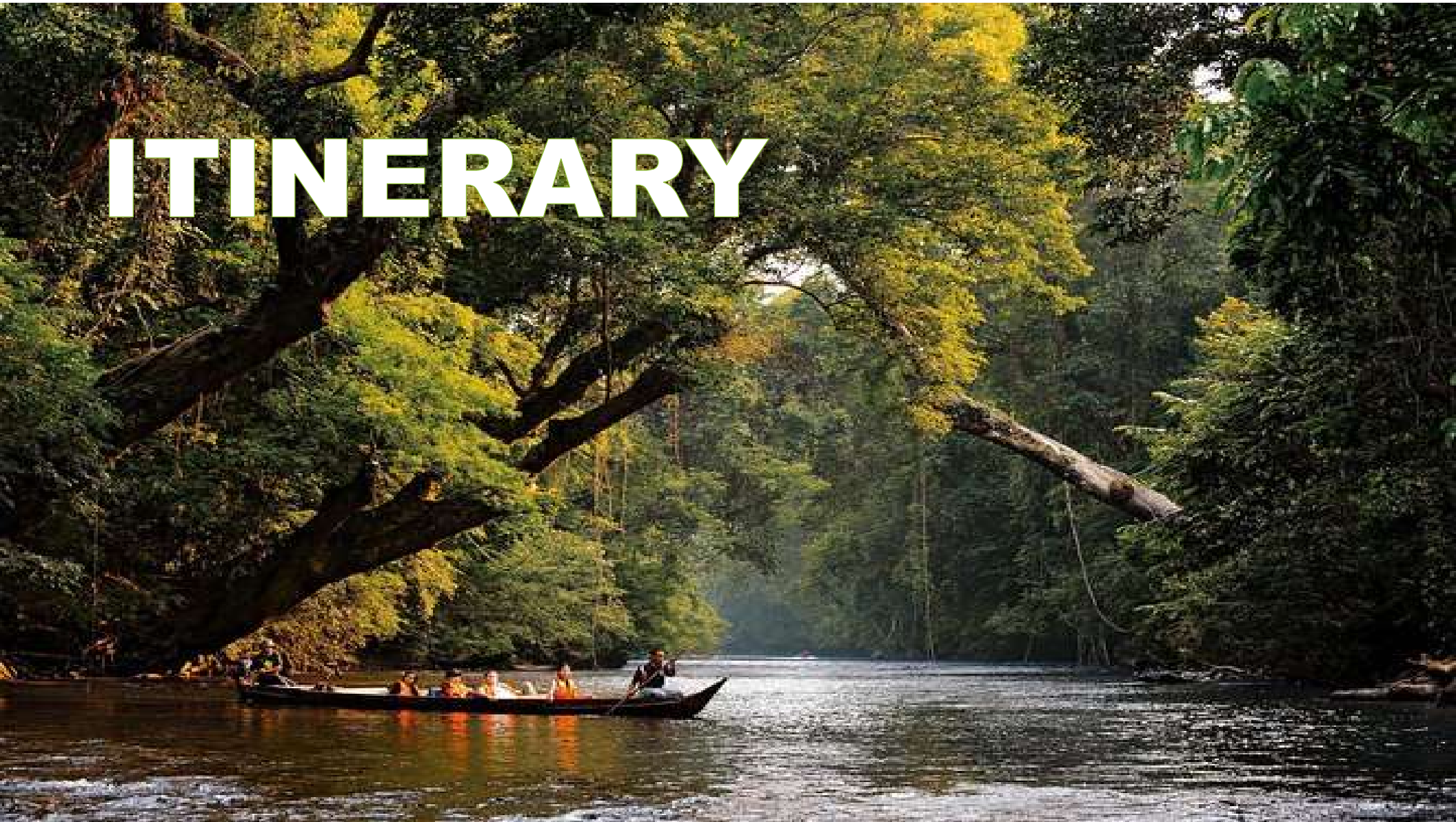


TAMAN NEGARA

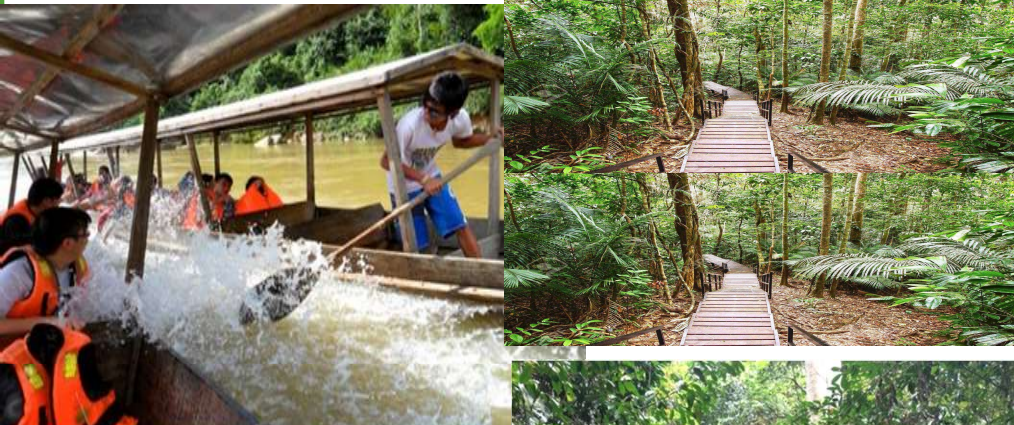


Taman Negara is a national park in Peninsular Malaysia. It was established in 1938/1939 as the **King George V National Park** after Theodore Hubback lobbied the sultans of Pahang, Terengganu and Kelantan to set aside a piece of land that covers the three states for the creation of a protected area.

ITINERARY



DAY 1 Kuala Lumpur - Taman Negara (D)
Night Jungle Walk



DAY 3 Taman Negara – Kuala Lumpur (B)
Back to home sweet home.

- DAY 2 Taman Negara** (B/L/D)
- Jungle Trekking to Bukit Teresek
 - Conopy Walk
 - Lunch
 - Rapid Shooting
 - Visit Aboriginal Settlement
 - Tea Break
 - Dinner

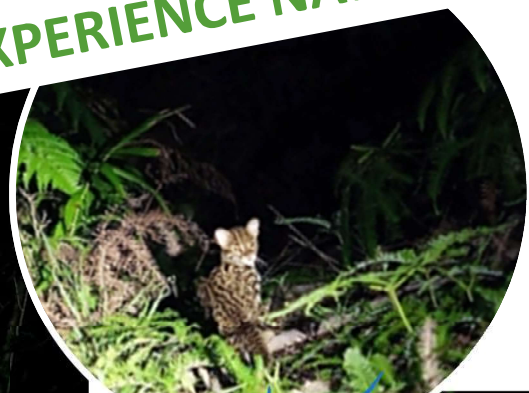




SPECIAL ARRANGEMENT

NIGHT JUNGLE WALK

WITH EXPERIENCE NATURE GUIDE



●●●●
RAPID SHOOTING

WOW!



●●●●
JUNGLE TREKKING



WOW!



WOW!





ABORIGINAL SETTLEMENT

Propose company to prepare some food, clothing or educational products for the aboriginal settlement

COMPANY BRANDING ON PUBLIC WELFARE





PROPOSED HOTEL

●●●●
XCAPE RESORT

